

Comfort Flow™ Mats

Anti-Fatigue Mats • Wet Area • Indoor

Comfort Flow is a flow-through mat with excellent anti-fatigue properties designed for wet areas where grease, oil, and chemicals may be present.



- **Clean** – Drainage holes allow liquid to flow through; lifetime anti-microbial treatment prevents odors and degradation of the mat
- **Safe** – Beveled edges provide a safe transition from floor to mat; certified high-traction by the National Floor Safety Institute (NFSI)
- **Comfortable** – High-density closed-cell nitrile rubber cushion provides excellent anti-fatigue qualities
- **Versatile** – Grease and oil proof; chemical resistant; welding safe
- **Easy to Clean** – Lightweight flexible design ensures easy handling and cleaning
- Commercially launderable



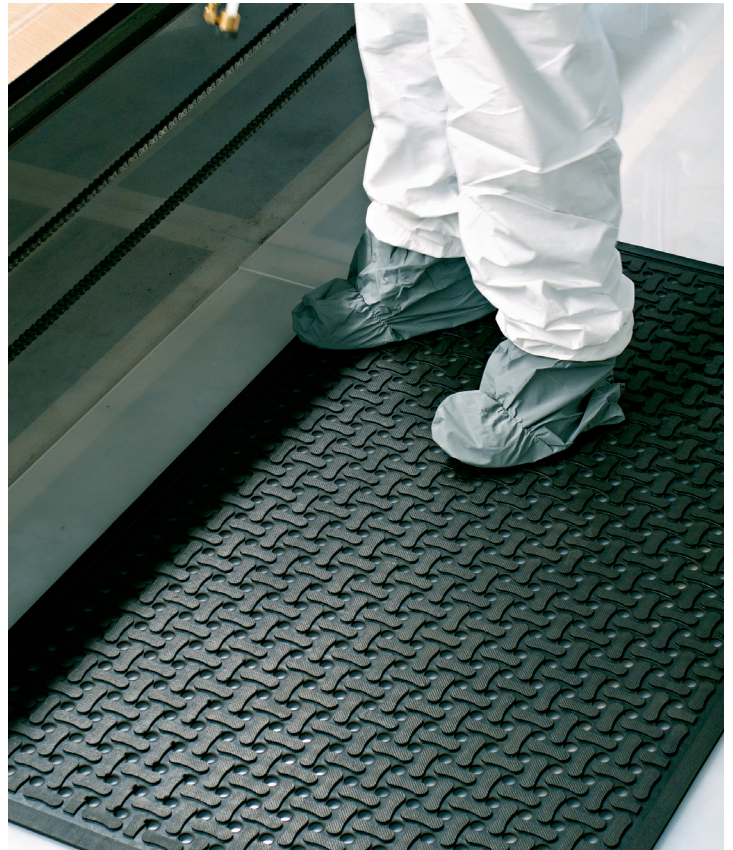
Flexible Design

Unlike traditional kitchen mats which are typically heavy and difficult to move for cleaning, Comfort Flow mats have a flexible design that makes them easy to roll and handle. They can be cleaned in a variety of ways: scrubbed with a deck brush or cleaned with a pressure washer, rolled and washed in a commercial dishwasher*, and they can withstand commercial laundering and sterilization in an autoclave.

*Please consult your local health code for restrictions or limitations before washing your mats in the dishwasher.

Comfort Flow™ Mats

Anti-Fatigue Mats • Wet Area • Indoor



Product No. 420

Size (ft.)	Size (in.)	Shipping Weight
2' x 3'	23" x 34"	6 lbs.
3' x 5'	34" x 56"	14 lbs.
3' x 9'	34" x 109"	25 lbs.
4' x 6'	42" x 68"	20 lbs.

Note: Mat sizes are approximate as rubber shrinks and expands in conjunction with temperature and time. Tolerable manufacturing size variance is 3-5%.