



Accessories

For Cleaning

**Hose Complete**  
28-2.0m with Front cuffs 38  
(Standard equipment)  
Part No. 140G04-3



**Bending pipe**  
Part No. 192562-3



**Straight pipe**  
Part No. 192563-1



**F/C switching  
T-nozzle 38**



Part No. 198184-7

**Wide Nozzle**  
(Standard equipment)



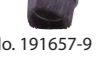
Part No. 458891-7

**Sash Nozzle**  
(Standard equipment)



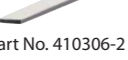
Part No. 458919-1

**Round brush**



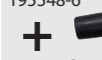
Part No. 191657-9

**Corner nozzle**



Part No. 410306-2

**Joint 22-38**



Part No. 195548-6

**+ Tapered nozzle set**



Part No. 192236-6



Filter complete, Pre filter and Damper

**Filter complete (HEPA filter)**  
(Standard equipment)



Part No. 162518-0

**Pre filter and Damper set** \*dry only  
(Option)



Part No. 199827-4



**Shoulder Belt Set**  
(Standard equipment)



Part No. 199486-4



**Cordless Portable Vacuum Cleaner (7.5L)  
DVC750L**

- Electronic 2-Speed
- Revolving Hose
- Static Free Hose

<b>Battery Capacities</b>	18V Li-Ion
<b>Container Capacity</b>	7.5 L (Dry) / 4.5 L (Wet)
<b>Continuous Use</b>	Approx. 30 minutes (High) with BL1850B Approx. 60 minutes (Low) with BL1850B
<b>Maximum Air Flow</b>	57 CFM
<b>Power</b>	90 W (High) / 25 W (Normal)
<b>Static Water Lift</b>	26.9" (680 mm)
<b>Noise Level</b>	76 dB(A)
<b>Overall Dimensions</b>	(L x W x H): 16-1/2" x 9-7/8" x 11" (418 mm x 251 mm x 278 mm)

**Standard Equipment:** Tool Only. Battery and Charger Sold Separately. HEPA Filter (162518-0), 1-1/8" x 6-1/2" Hose (140G04-3), Wide Nozzle (458891-7), Sash Nozzle (458919-1)



**Cordless Portable  
Vacuum Cleaner (7.5L)  
DVC750L**



**Compact, portable  
and easy-to-use**



**18V  
LITHIUM-ION**

When QUALITY & SERVICE COUNTS – Choose Makita

makita.ca

57 CFM Hose  
1-1/8" x 6-1/2"

Static Water Lift  
**26.9"**

**HEPA filter BL MOTOR XPT**

# Compact, portable and easy-to-use

Large dust bag capacity

# 7.5L



**HEPA filter**    **BL MOTOR**    **18V LITHIUM-ION**

Cordless Vacuum Cleaner

# High power and long run time

Max Air Flow  
**57 CFM**

Static Water Lift  
**26.9"**

Continuous use  
**30 min**  
Mode: High with BL1850B



Battery fuel gauge



Hose can be stored

Powered by 18V Li-ion battery



Nozzle can be stored



**Blower outlet**  
Insert the hose to blower outlet and turn it clockwise until it clicks.



**Easy disposal**

For vacuum cleaning

Hose: 28mm-2m with Front cuffs 38



**XPT**  
EXTREME PROTECTION TECHNOLOGY



Water capacity 4.5L

## For Dust Collecting (Connecting the tool)



Hose: 1-1/8" x 6-1/2'    Supplied with Front cuffs 38



Joint 22-38

Part No. 195548-6



Attachments