

Recording a new cleaning plan



1 Place the key on the machine and turn it on



2 Insert the passcode on the touchscreen (1337)



3 Position the right side of the machine close to the Home marker (61 cm)



4 Select teach and follow instructions on the touchscreen



5 SC60 Home marker scanning



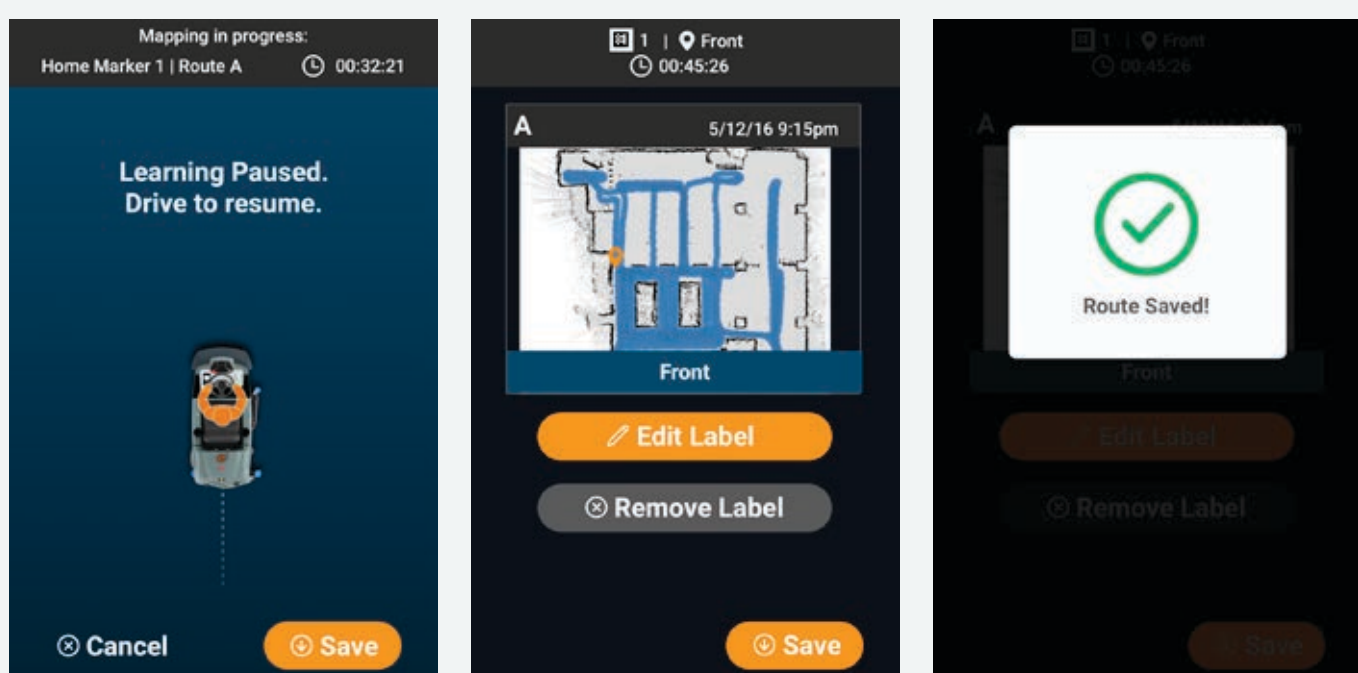
6 Select the slot where you want your cleaning plan to be saved



7 Before starting recording the plan press the One touch™ and adjust the cleaning setting



8 You can pause the recording by simply releasing the drive pedal



9 If finished, just follow the steps and save the plan

Daily use – replaying a cleaning plan



1 Place the key on the machine and turn it on



2 Insert the passcode on the touchscreen (1337)



3 Position the right side of the machine close to the Home marker (61 cm)



4 Select Clean and follow the instructions on the touchscreen



5 SC60 Home marker scanning



6 Select and decide the order of cleaning plans that you want to run, they will run consequently



7 Follow the instructions on the touchscreen to secure the unit and start the cleaning plan

Daily maintenance



1 Open the cap and Fill the machine with cold water



2 Fill the detergent tank



3 Wipe all sensors with a clean microfiber cloth



4 Empty the dirty-water tank with a hose, and gently rinse the tank



5 Clean the squeegee if needed



6 Charge the machine for 8-10 hours