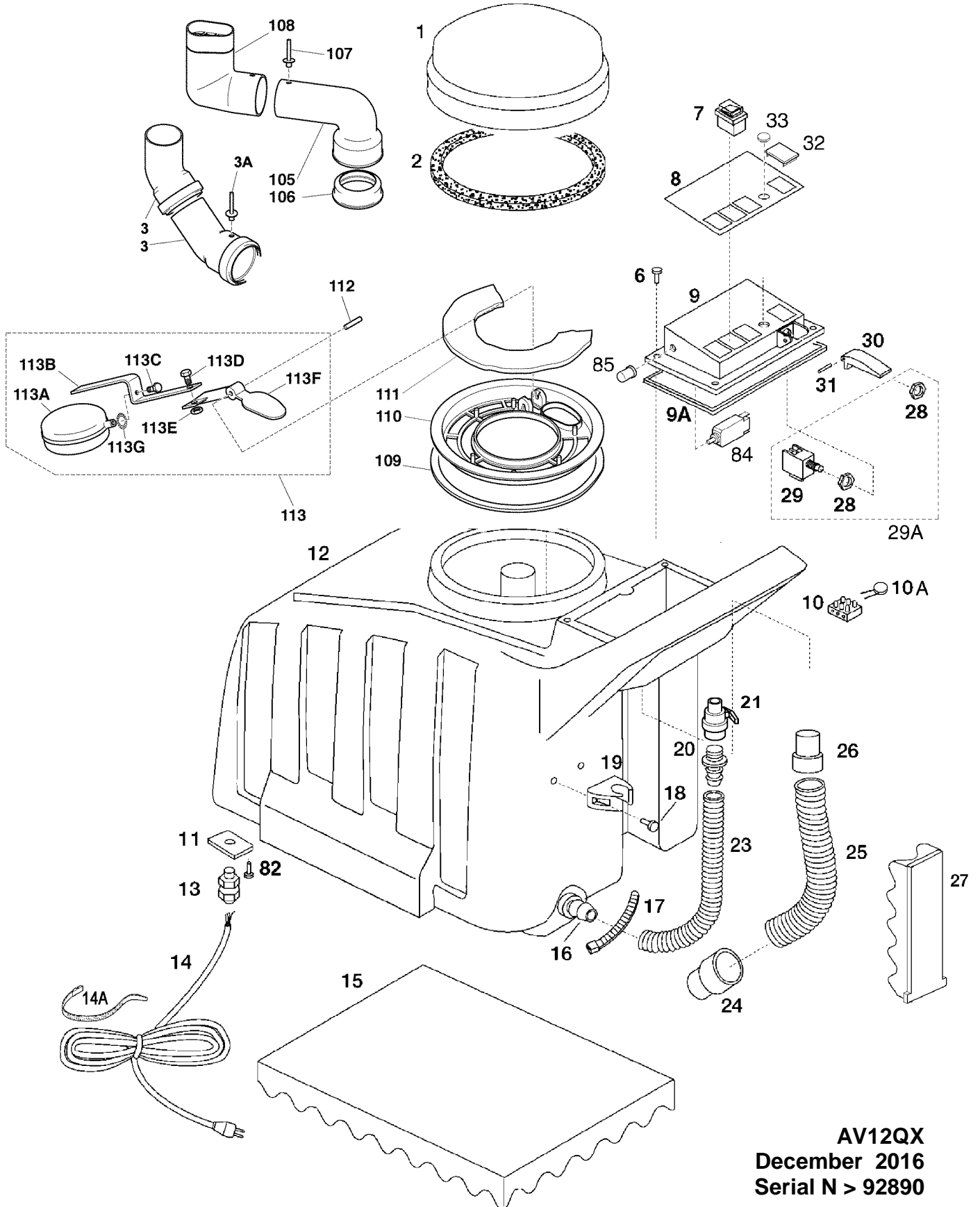


TABLE 18 1/2



December 2016

SELF-CONTAINED MACHINE MODEL AV12QX

Ref	Code	Description
1	15178	COVER
	15178C	COVER WITH GASKET
2	15179	GASKET
3	15183	ELBOW 45°
3A	15519	RIVET
6	15551	SCREW TC+ 4x16
7	15217	2 POSITIONS SWITCH
	15220	3 POSITION SWITCH (FOR PUMP)
8	151191	PANEL LABEL
9	15177	CONTROL PANEL
9A	15128	PANEL GASKET
10	152361	CONNECTING TERMINAL
10A	158132	VARISTOR FOR PUMP
11	15109	FAIRLEAD PLATE
12	11590AZ	BLUE UPPER TANK
	15190V	GREEN UPPER TANK
13	15295	FAIRLEAD WITH NUT
14	15216	CABLE – 3 x 1,5 x 15m EURO PLUG
	15215	CABLE – 3 x AWG14 x 15m USA PLUG
15	15192	SOUNDPROOFING PANEL
16	15161	HOSE NIPPLE
17	15541	TIE
18	15544	SCREW 4,2x22
19	15160	CLIP
22	15162	TIE
23	151591C-MAXI	DRAIN HOSE WITH CAP
	15358C	COMPLETE DRAIN HOSE: CODICI 541 + 1591C-MAXI
24	153340N	CUFF D. 38 WITH EXTERNAL LAYER
25	15364-SERE	HOSE D.38 L=34 CM
26	15334	CUFF D. 38
27	15193	SOUNDPROOFING PANEL (UP TO SERIAL N. 92.890)
	15193N	SOUNDPROOFING PANEL (FROM SERIAL N. >92.890)
29A	15231C	MICRO-SWITCH, COMPLETE WITH SUPPORT AND 2 NUTS (COD.277+231)
30	154571	DRIVE LEVER
31	15599	PIN
32	155021	CAP
33	15502	CAP
34	15560	SCREW STAINLESS STEEL TC+ 5x30
35	155171	STAINLESS STEEL WASHER 5x15

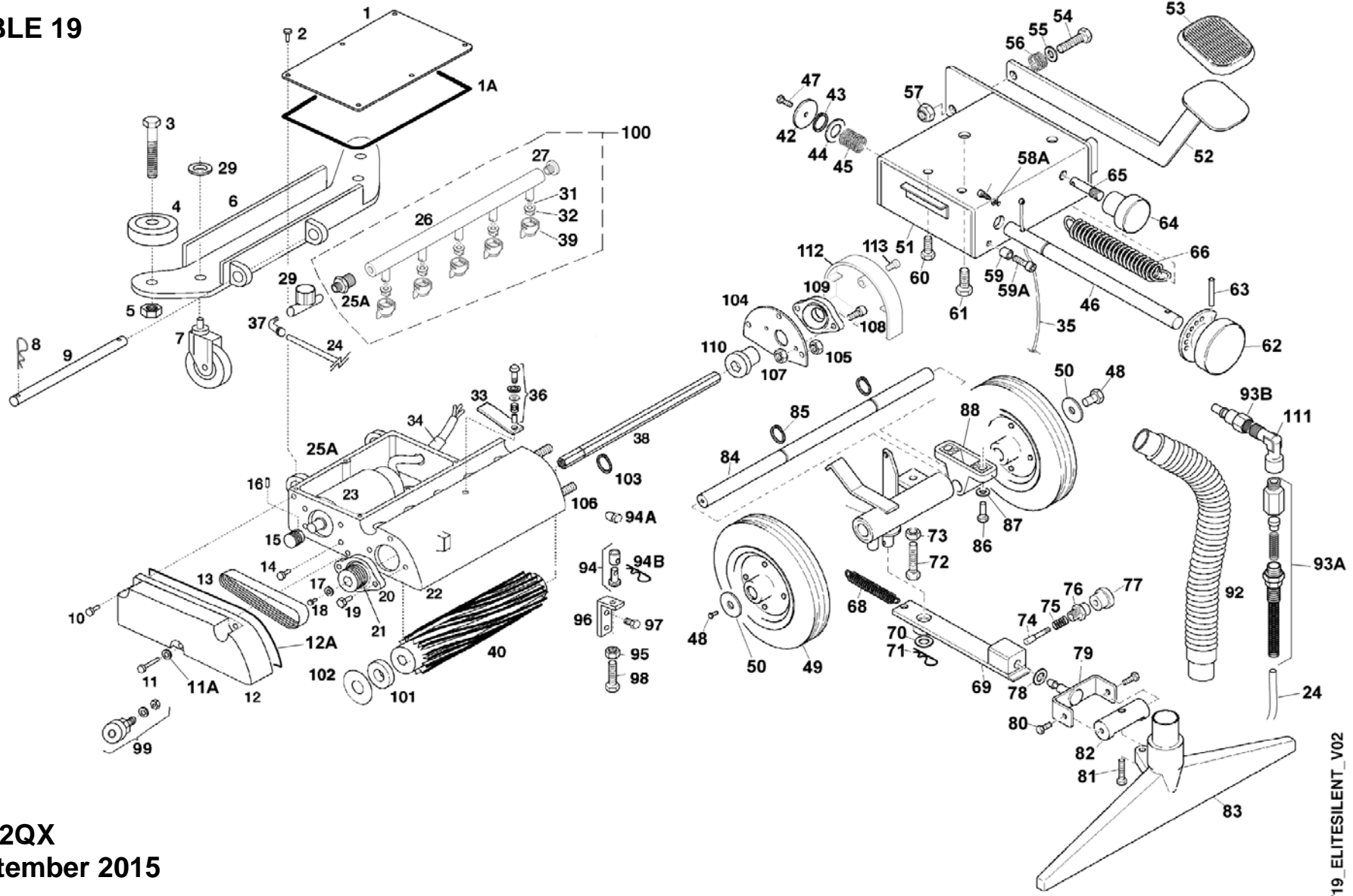
SELF-CONTAINED MACHINE MODEL AV12QX

Ref	Code	Description
36	157361	VIBRATION DAMPING
37	15194	ALUMINIUM SILENCER FLANGE
38	15195	SOUNDPROOFING FILTER
39	15196	SOUNDPROOFING FILTER
40	15197	SOUNDPROOFING FILTER
41	15198	SOUNDPROOFING FILTER
42	1581213	MOTOR GASKET 13mm (FOR 808PA)
	15825	MOTOR GASKET 3mm (PER 808)
43	15808PA	HIGH WATERLIFT 3 STAGES VACUUM MOTOR 1500W 220-240V (S/N > 47090)
	15808	3 STAGES MOTOR 1300W 220-240V 50/60Hz (S/N<47089)
	15809PA	HIGH WATERLIFT 3 STAGES VACUUM MOTOR 1400W 110-120V (S/N > 47090)
	15809	3 STAGES MOTOR 1300W 110-120V 50/60Hz (S/N <47089)
	15810PA	HIGH WATERLIFT 3 STAGES VACUUM MOTOR 1300W 100V (S/N > 49620)
	15810	3 STAGES MOTOR 1300W 100V 50/60Hz (S/N <49620)
44	15234	CONNECTOR
	15250	MALE FASTON – 6,3mm
45	15825	MOTOR GASKET 3mm
46	15191AZ	BLUE LOWER TANK
47	15142	COUPLER
48	15542	SCREW TC+ 4,2x16
49	15608	FILTER
50	15747	BALLAST
51	15745	EXTRAFLEX PIPE
52	15702D	HOSE NIPPLE
53	15530	SCREW TC 5x65
54	15199	CIRCULAR LOWER PANEL
55	15200	LOWER SOUNDPROOFING DISC
56	15201	LOWER MOTOR FLANGE
57	15202	LOWER SOUNDPROOFING FILTER
58	15132	LOWER SOUNDPROOFING CILINDER
59	15746	RILSAN PIPE
60	15714	QUICK DISCONNECT FEMALE
61	15540	BRASS WASHER
62	15147	NEOPRENE WASHER
63	15622	ELBOW
64	15643	PUMP 220-240V 50-60 Hz 135 PSI+RECTIF.27935
	15644	PUMP 100-120V 50-60 Hz 135 PSI (INTERNAL RECT.)
64A	15643C-M	PUMP 220-240V 50-60 Hz 100 PSI + RECTIF.27935 + FITTINGS + METAL COUPLING
	15644C-M	PUMP 100-120V 50-60 Hz 100 PSI (INTERNAL RECTIF.) + FITTINGS + METAL COUPLING
65	15564	RING NUT
66	15546	SCREW TC+ 5x25
67	15517	WASHER 5x15
68	157360	VIBRATION DAMPING
69	15720	ELBOW

SELF-CONTAINED MACHINE MODEL AV12QX

Ref	Code	Description
69A	15753	EXTENSION FOR METAL COUPLING
	15721	EXTENSION FOR PLASTIC COUPLING
70	151371	GASKET FOR COUPLING 687-PE
71	15687-T	QUICK DISCONNECT FEMALE – METAL
72	15186	PANEL GASKET
73	15148G	LOWER PANEL FOR ELITE(WITHOUT HOLE FOR PLUG)
	15148EP	LOWER PANEL FOR ELITE (WITH HOLE FOR PLUG)
74	15163	BUSH
75	151190	LOWER PANEL LABEL
76	15262	CONNECTING PART
77	15536	STAINLESS STEEL SCREW TC+ 4x10
78	15291	CABLE SHEATH
79	15265	TIE
80	152614C	CABLE SHEATH WITH WIRES+COD.260+265
81	152594C	SOCKET + WIRES
82	15538	SCREW TC+ 3,9x13
83	1527935	RECTIFIER FOR BRUSH MOTOR
84	15293	CIRCUIT BREAKER FOR 110V BRUSH MOTOR (1,5 A)
84	152908	CIRCUIT BREAKER FOR 220V BRUSH MOTOR (0,8 A)
85	15294	CAP FOR CIRCUIT BREAKER
86	15751	DRAIN VALVE
87	15521	LOCKING WASHER DIAM.12mm.
88	15752	CONNECTING PART
89	15295	FAIRLEAD WITH NUT
90	1527935	EXTERNAL RECTIFIER FOR SHURFLO PUMP
91	15290	PUMP RADIO INTERFERENCE SUPPRESSOR
91A	15538	SCREW TC+ 3,9 x 13
92	15235	MOTOR RADIO INTERFERENCE SUPPRESSOR
93	152690	ELECTRICAL OUTLET FOR EURO PLUG
94	15538	SCREW TC+ 3,9x13
95	15153.1	ELBOW
105	15153.1	ELBOW 90° WITHOUT GASKET
106	15153.2	GASKET FOR ELBOW 90°
107	15519	RIVET 4x12
108	151533C	SPECIAL OVAL ELBOW
109	1518804	GASKET FOR FILTER SUPPORT
110	1518801	SUPPORT FOR GRACE-SILENT LARGE FILTER
111	1518803	LARGE FILTER PPI30 – GRACE-SILENT
112	15599	CYLINDRIC PIN 4x34,8 - INOX
113	1517042C-GRACESIL	COMPL.GROUP – FLOATER MOVING PART
113A	151707	FLOATER WITH THREAD FOR SCREW
113B	151715	PLATE FOR GRACE-SILENT FLOATER
113C	1558206W	SCREW TE 6x8 INOX passo 1/4x3/8 WHITWORTH
113D	15582	SCREW TE 6x14 UNI 5739 INOX
113E	15562R	NUT INOX D.6 WITH WASHER
113F	1518802	MOVING PART GRACE-SILENT IND. FLOATER
113G	1552106I	LOCKING WASHER DIAM 6 INOX

TABLE 19



AV12QX
September 2015



INJECTION-EXTRACTION MACHINE MODEL AV12QX

Ref	Code	Description
1	15425	SLIDING BLOCK COVER
1A	151864	GASKET 3mm FOR COVER 425
2	15536	SCREW TC+ 4X10 INOX
3	15567	SCREW TE 8x40
4	15426N	WHEEL
5	15568B	NUT DIAM. 8
6	15427	FRONT WHEELS SUPPORT
7	15115.1	FRONT WHEEL
8	15569	COTTER PIN
9	15428	SHAFT
10	15551	SCREW TC+ 4x16 INOX UNI 7687
	1532010	O-RING
11	15551	SCREW TC+ 4x16 INOX UNI 7687
	1532010	O-RING
12	15429N	BELT COVER CARTER (FROM S/N 34040)
12A	151863	GASKET FOR CARTER 429N (FROM S/N 34040)
13	15430	BELT
14	15572	SCREW TE 5x16
15	15431	PULLEY
16	15573	STOP DOWEL
17	155172	STAINLESS STEEL WASHER 5x20
18	15575I	STAINLESS STEEL SCREW TE 5x12
19	15574	SCREW TC BRUGOLA 6x14 (FROM S/N. 34040)
	15576	SCREW TE 10x16 (UNTIL S/N. 34039)
20	154320-I	STAINLESS STEEL BEARING WITH SUPPORT – DIAM .17 (FROM S/N. 34040)
	15432-I	STAINLESS STEEL BEARING WITH SUPPORT – DIAM.20 (UNTIL S/N. 34039)
21	15433N	BRUSH PULLEY NEW TYPE – (FROM S/N. 34040)
	15433	BRUSH PULLEY – (UNTIL S/N 34039)
22	15434N	SLIDING BLOCK – NEW TYPE (FROM S/N. 34040)
	15434	SLIDING BLOCK – OLD TYPE (UNTIL S/N 34039)
23	15435	BRUSH MOTOR 220-240V
	15455	BRUSH MOTOR 100-120V
24	15759C	WATER PIPE L=150CM
25A	15766	NIPPLE 3/8”-1/8”
26	15757	MANIFOLD
27	15758	CAP
29	15617	WATER-FLOW REGULATION VALVE



INJECTION-EXTRACTION MACHINE MODEL AV12QX

Ref	Code	Description
31	153209	O-RING
32	15730-110	PLASTIC NOZZLE 0.15/110
33	155650	MANIFOLD LOCK
34	15237	FAIRLEAD
35	154361	STEEL WIRE
36	15461	SPRING
	155171	WASHER 5x15 INOX
	155172	WASHER DIAM. 5x20
	15546I	SCREW TC+ 5x25 INOX
	155651	BUSH
37	15626	ELBOW MF A10 1/8-1/8
	15703	AUTOMATIC COUPLING F-ATT.M. R1 8 1/8
38	15437	SHAFT FOR BRUSH
39	157180	LOCKING NUT FOR QUICK DISCONNECT NOZZLE
40	15369	BRUSH
42	155173	WASHER 5x32
43	15578	SEEGER
44	15580	BRASS WASHER 15,2x27x1
45	15461	SPRING
46	154391	SHAFT
47	15572	SCREW TE 5x16
48	15582	STAINLESS STEEL SCREW TE 6x14
49	15422	WHEEL
50	155632	WASHER 6x30x2 Zn
51	154660	METAL HOUSING
52	154670	PEDAL
53	154671	RUBBER COVER FOR PEDAL
54	15579	SCREW TE 10x40
55	155401	WASHER 10x30
56	154712	SPRING
57	15526A	LOCKING NUT D.10
58	15584.1	LOCK SCREW
58A	155631	WASHER DIAM. 6x12
59	15587-1	THIMBLE
59A	15550	SCREW TC BRUGOLA 6x20
60	15576	SCREW TE 10x16



INJECTION-EXTRACTION MACHINE MODEL AV12QX

Ref	Code	Description
61	15583	SCREW TE 8x20
62	15456	KNOB
63	15588	ELASTIC PIN
64	154713	PRESSURE REGULATION KNOB
65	154716	ROD FOR KNOB
66	1547102	SPRING FOR VACUUM PRESSURE
67	154680	CYLINDER, COMPLETE WITH BRACKETS
68	154710	SPRING
69	154690	SUPPORT FOR VACUUM HEAD
70	15580	BRASS WASHER 15,2x27x1
71	15569	COTTER PIN
72	15598	SCREW TE 10x50
73	15526B	NUT D.10 H=8
74	154700.3	PAWL PIN
75	15607	PAWL SPRING
76	154700.2	PAWL BODY
77	154700.1	PAWL HAND GRIP
	154700	COMPLETE PAWL (4700.3+607+4700.2+4700.1)
79	154714	SUPPORT FOR VACUUM HEAD
80	15583	SCREW TE 8x20
81	15579	SCREW TE 10x40
82	154715	SUPPORT FOR VAC.HEAD ORIENTATION
83	15449C	VACUUM HEAD WITH HOSE D. 38
	15449C-ELITE	VACUUM HEAD WITH HOSE D.38 AND SUPPORT (ITEMS 79,80,81,82,83)
84	154181	SHAFT FOR WHEELS
85	1557820	SEEGER DIAM. 20
86	15583	SCREW TE 8x20
87	15594	WASHER 8x24x2 UNI 6593 Zn
88	15419N	PILLOW BLOCK
92	15370C	VACUUM HOSE D.38 WITH CUFFS
93A	156181-ANTIG	COMPLETE COUPLING M. 1/4" FOR 6/8 PIPE, WITH ANTIDROP (CODEX 6181+6071+111+7432)
	156181	COUPLING M. 1/4" FOR 6/8 PIPE, WITH SPRING
	156071	SPRING
	15111	RUBBER PIN
	157432	BRASS COUPLING FOR ANTIDROP



INJECTION-EXTRACTION MACHINE MODEL AV12QX

Ref	Code	Description
93B	15689-T	QUICK DISCONNECT MALE - ATT. F.1/4" WITH ANTI-DRIP (SERIAL N>56.000)
	15689-PE	QUICK DISCONNECT MALE - ATT. F.1/4" WITHOUT ANTIDRIP (SERIAL N<56.000)
94	155083	EXTERNAL SUPPORT
	155084	INTERNAL PIN
94A	155081	ROPE LOCK
94B	15569	COTTER PIN
95	15568	NUT D.8
96	15508	STOP PLATE
97	155091	SCREW TC 6x10
98	155082	SCREW TE 8x40 WITH HOLE
99	154310	COMPLETE BELT STRETCHER (568+52108+4310.1+43102-I+57808+3209)
	15568	NUT- DIAM. 8
	1552108	LOCKING WASHER – DIAM.8
	154310.1	BELT STRETCHER SHAFT
	1543102-I	STAINLESS BELT STRETCHER BEARING
	1557808	SEEGER – DIAM. 8
	153209	O - RING
100	157572N	MANIFOLD WITH NOZZLES+CAP+NIPPLE (ITEMS 25A,26,27,28,30,31,32,39)
101	154322	RUBBER GASKET FOR BEARING (FROM S/N 34040)
	154322+1543221	RUBBER GASKETS FOR BEARING (UNTIL S/N 34039)
102	154323	MAILAR DISC FOR BEARING
103	1557813	SEEGER DIAM.13 FOR SHAFT
104	154324	PLATE FOR BRUSH REMOVAL
105	15562A	LOCKING NUT – DIAM.6
106	155741	SCREW TC BRUGOLA 6x16
107	1552306	BRASS NUT – DIAM. 6
108	15574	SCREW TC BRUGOLA 6x14
109	154320-I	STAINLESS STEEL BEARING WITH SUPPORT – DIAM. 17
110	154381	PULLEY – DIAM.17
111	1562614	ELBOW COUPLING MF ¼
112	1543241	COVER FOR BEARING
113	15570	SCREW TC+ 5x16 Zn