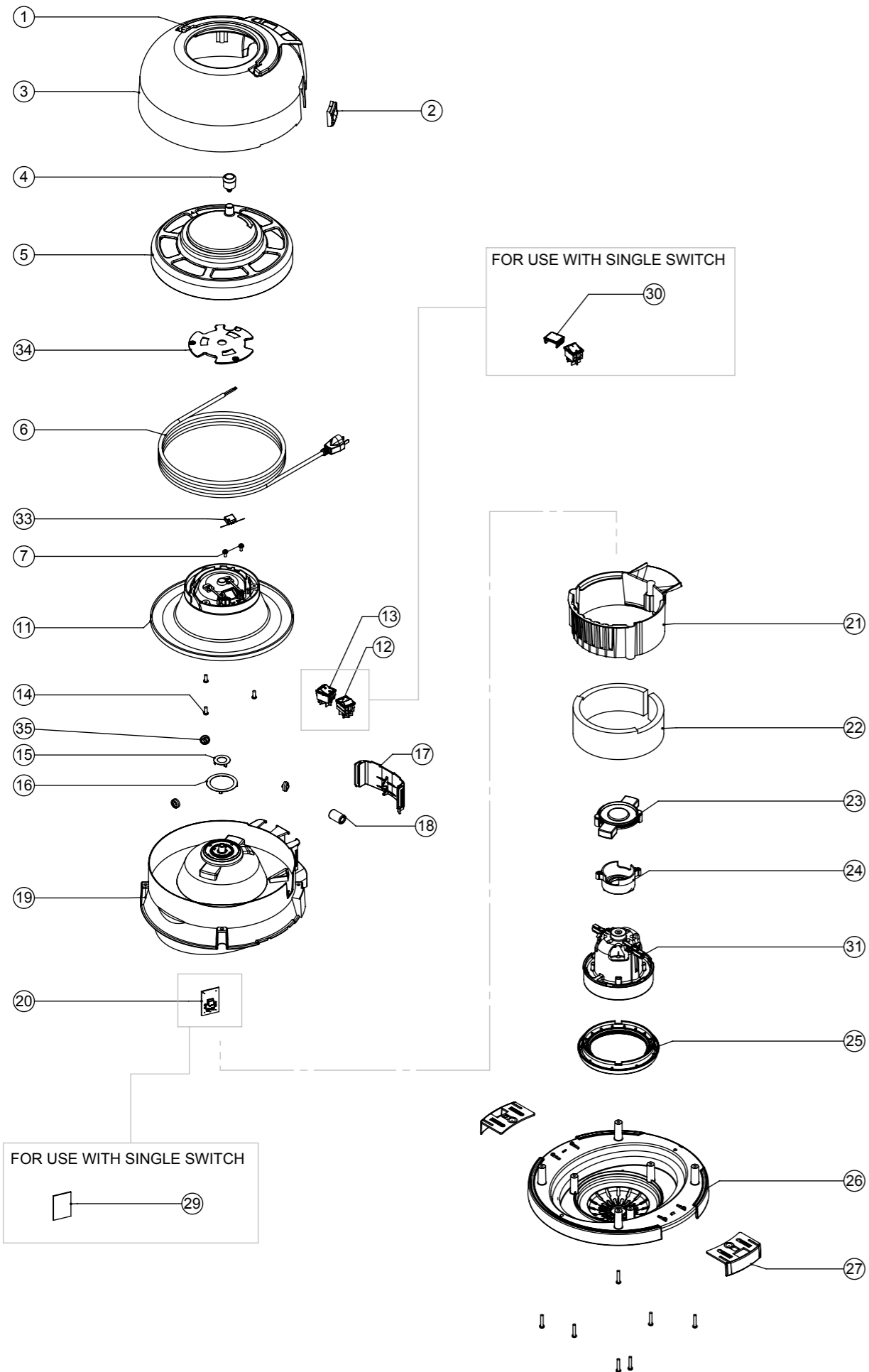


Numatic International Spare Parts

Model No: HEAD STYLE 1 ASSEMBLY 1-STAGE (120V) 2-SPEED & SINGLE SPEED EXPLODED

N/A
DRAWING: DRW-19016 ISS:A17
14/12/2017

Models: HVR, HET, HVX, NRV



Numatic International Spare Parts

Model No: HEAD STYLE 1 ASSEMBLY 1-STAGE (120V) 2-SPEED & SINGLE SPEED EXPLODED

ITEM:	PART No:	Description	QTY.	COMMENTS:
1	227120	HANDLE - HVR/HET/NRV	1	
2	237687	BLACK CABLE ENTRY	1	
3	-	COVER	1	CONTACT NUMATIC FOR DETAILS
4	229617	CABLE REEL WINDER KNOB ASSY	1	
5	227180	CABLE REEL COVER (V2 RATED)	1	
6	236041	MAINS CABLE (10.0 METRE LONG / 18AWG / 2 CORE / YELLOW CABLE / CSA PLUG)	1	
7	291151	M4 X 10MM LONG T20 SEMS SCREW Z/PL - PRODUCT CODE 8.8 - TX20 HEAD	2	
8	227145	CONNECTING STRIP	2	
9	227103	CONTACT BUSH	2	
10	219009	M4 BRASS TAPPEX INSERT	2	
11	206491	CABLE REEL MOULDING	1	
12	220552	RED ROCKER SWITCH (WHITE PRINT)	1	
13	220243	SWITCH.SPDT.RKR.HV	1	
14	291152	NO8.1/2 INCH LG.T20.SCREW.Z/PL.PLASTITE	3	
15	227141	INNER CONTACT RING	1	
16	227142	OUTER CONTACT RING	1	
17	229738	SWITCH COVER V2 RATED MATERIAL	1	
18	230097	AXIAL FERRITE BEAD	1	
19	237746	TOP MOTOR HOUSING V2 (HEAD STYLE 1 AND 9) WITH PCB SUPPORT	1	
20	206608	NUMATIC 2 SPEED CONTROL PCB	1	
21	237674	AIRGUIDE (DL1 TYPE)	1	
22	203038	WRAP-ACOUSTIC	1	
23	229614	MOTOR PLATE BI-MATERIAL	1	
24	237480	ADAPTOR MOTOR (DL1 603T)	1	
25	237089	BOTTOM MOTOR GASKET - CUP MOTOR	1	
26	237606	BOTTOM MOTOR HOUSING (BI-MATERIAL)	1	
27	229622	TOGGLE (BI-MATERIAL)	2	
29	227957	BLANKING PLATE	1	
30	237082	BLANKING PLUG - ROCKER SWITCH	1	
31	205291	120V SINGLE STAGE THRO FLOW FAN MOTOR (DL1651T) TCO (620)	1	
32	291082	#8 SCREW 1"L T20 PAN HEAD P/L THREAD FORMING	7	
33	230096	SUPPRESSOR CAPACITOR ASSEMBLY WITH DISCHARGE RESISTOR (AS SUPPLIED)	1	
34	905922	REELER PLATE - STANDARD (STAR LOCK & BLANK)	1	
35	901009	ROLLER WHEEL	3	
36	220582	GREEN ROCKER SWITCH (WHITE PRINT) 0-1	-	

WIRING DIAGRAMS TBC