

SCRUB SYSTEM-RIGHT SKIRT ASSEMBLY

Kit	Item	Ref. No.	Qty	Description
			1	Assembly-Side Squeegee
K1	1		4	Bushing .31x.50x.53fc105c
K4	2		7	Nut, Hex Nyl Loc-Thin SS 1/4-20
K1,K3	3		9	Nut, Hex Nyl Loc SS 5/16-18
K1	4		8	Scr- Hex SS 5/16-18 X 1.25
K2	5		2	Scr. Pan Phil SS 6-32 X .38
K1	6		8	Wsh-Flt SAE SS 5/16
K2	7		2	Nut, Hex Nyl Loc-Thin SS 6-32
K4	8		7	Scr-Flt Phil SS 1/4-20 X .75
K3	9		1	Scr- Hex SS 5/16-18 X 4.50
K3	10		2	Knob, Wing
	11	56407303	1	Knob
K1	12		8	Bearing, Flange .625 X .500 X .250
K1	13		4	Bushing .32x.50x.35
K2	14		1	Latch Assembly
	15	56511160	1	Blade Support Weldment
	16	56510374	1	Blade Kit-Deck Linatex NOTE 1
K2	17		1	Strap-Blade
	19	56511275	1	Strap Weldment-Squeegee
	20	56511213	1	Guard-Edge Scrub
K4	21		1	Guard-Uhmw
K1	22	56510139	1	Plate-Catch
K1	23	56510254	2	Spring-Extension
K1	24		1	Arm-Side Squeegee Weldt
K1	25		1	Arm-Side Squeegee Weldt

Deck Blade Kits

	56510374	1	Blade Kit-Deck Linatex NOTE 1
*	56510375	1	Blade Kit-Deck Gum NOTE 1
*	56510376	1	Blade Kit-Deck PU NOTE 1

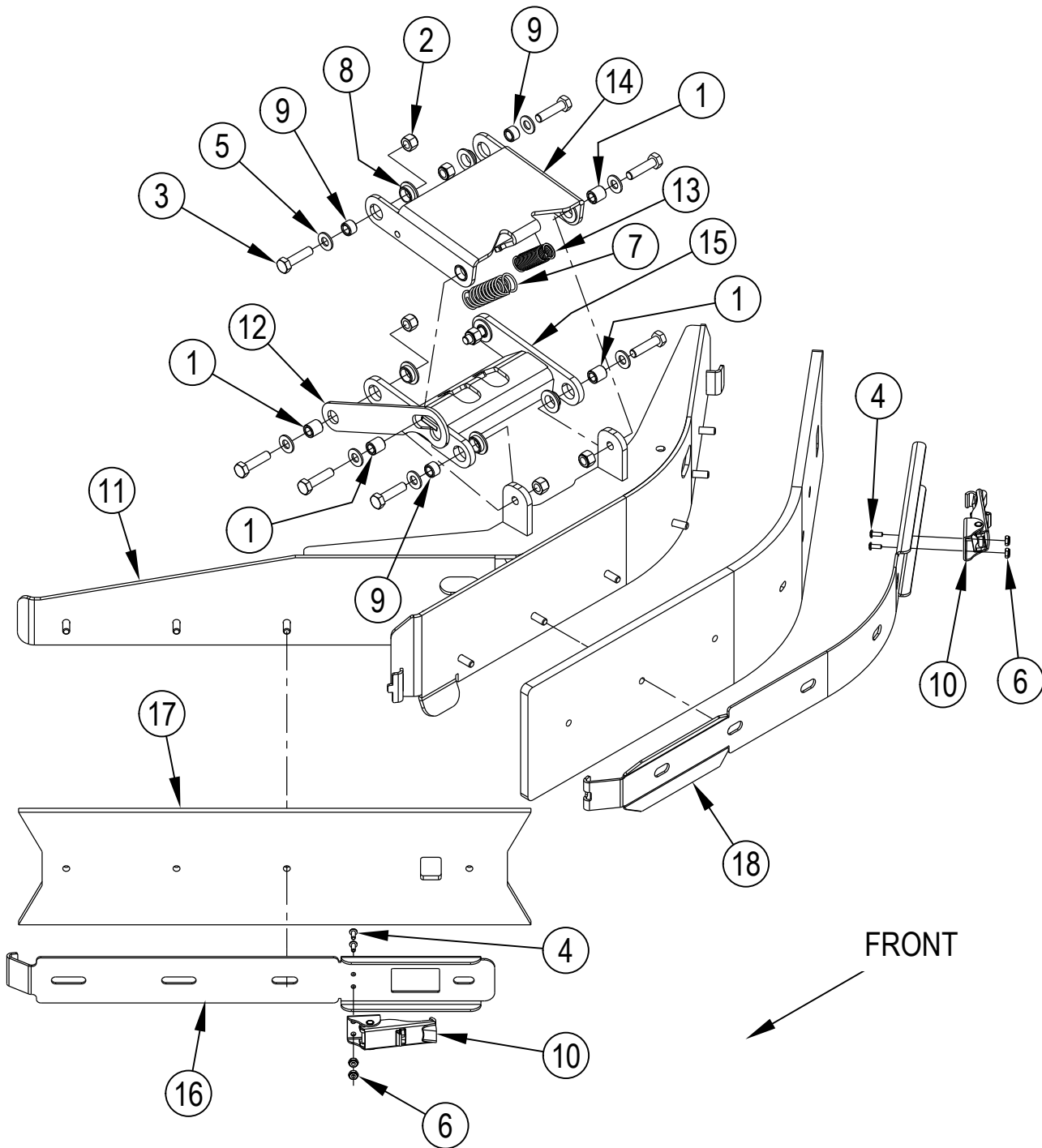
Service Kits

K1	56383050	1	Arm Kit-Right Side Squeegee
K2	56510811	1	Strap Kit-Side Squeegee
K3	56510812	1	Hardware Kit-Side Squeegee Rt
K4	56510813	1	Guard Kit-UHMW

* = Optional, Not Included

NOTE 1: All Deck Blade Kits include all blades for both skirt assemblies

SCRUB SYSTEM-LEFT SKIRT ASSEMBLY



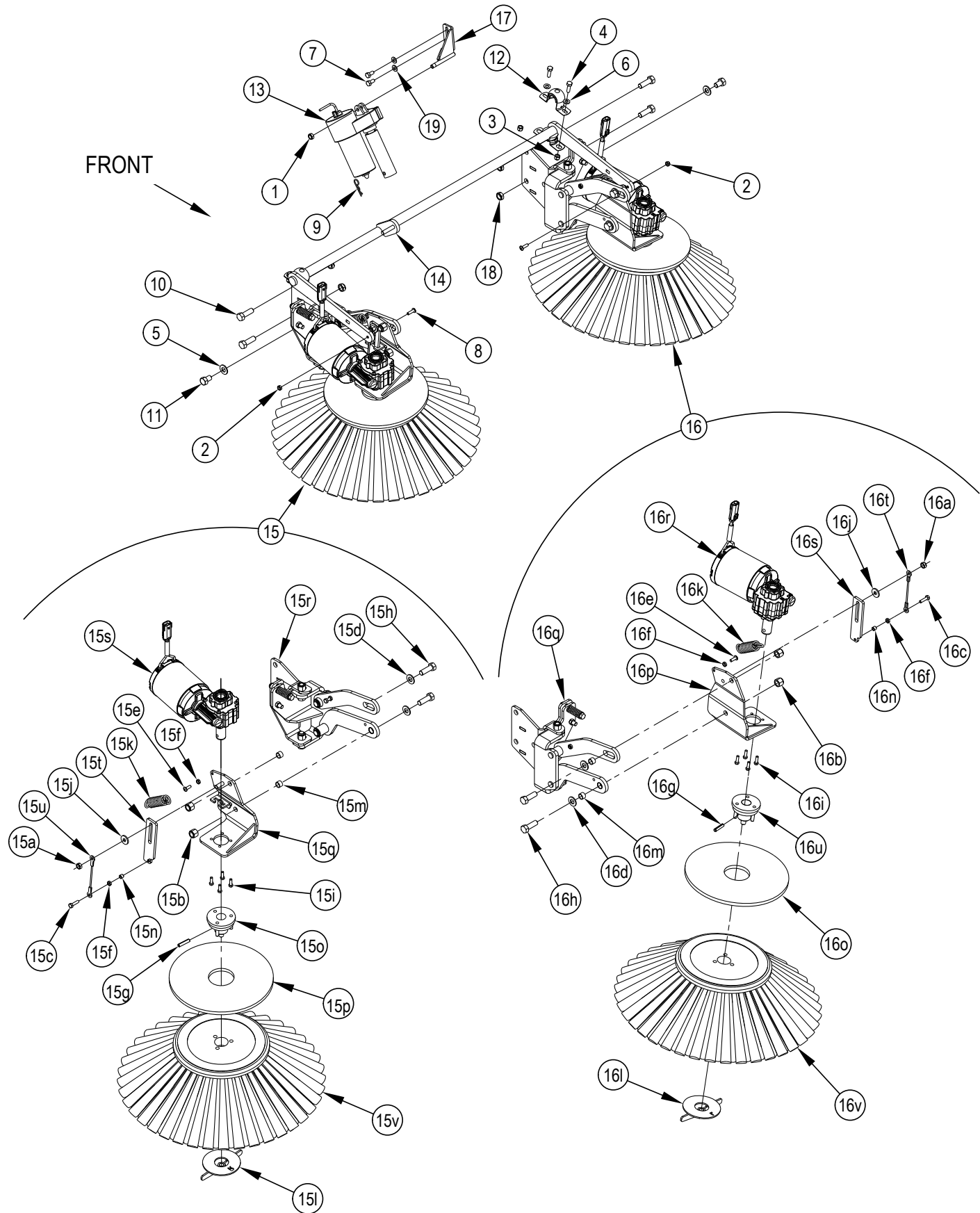
SCRUB SYSTEM-LEFT SKIRT ASSEMBLY

Kit	Item	Ref. No.	Qty	Description
			1	Assembly-Side Squeegee
K1	1		4	Bushing .31x.50x.53fc105c
K1	2		8	Nut, Hex Nyl Loc SS 5/16-18
K1	3		8	Scr- Hex SS 5/16-18 X 1.25
K2,K3	4		4	Scr, Pan Phil SS 6-32 X .38
K1	5		8	Wsh-Flt SAE SS 5/16
K2,K3	6		4	Nut, Hex Nyl Loc-Thin SS 6-32
K1	7	56305253	1	Spring, Extension
K1	8		8	Bearing, Flange .625 X .500 X .250
K1	9		4	Bushing .32x.50x.35
K2,K3	10		2	Latch Assembly
	11	56511161	1	Blade Support Weldment
K1	12	56510139	1	Plate-Catch
K1	13	56510254	1	Spring-Extension
K1	14		1	Arm-Side Squeegee Weldt
K1	15		1	Arm-Side Squeegee Weldt
K2	16		1	Strap-Blade
	17	56510374	1	Blade Kit-Deck Linatex NOTE 1
K3	18		1	Strap-Blade
Deck Blade Kits				
		56510374	1	Blade Kit-Deck Linatex NOTE 1
	*	56510375	1	Blade Kit-Deck Gum NOTE 1
	*	56510376	1	Blade Kit-Deck PU NOTE 1
Service Kits				
K1		56510810	1	Arm Kit-Left Side Squeegee
K2		56510883	1	Strap Kit-Side Squeegee LT FR
K3		56510882	1	Strap Kit-Side Squeegee LT RR

* = Optional, Not Included

NOTE 1: All Deck Blade Kits include all blades for both skirt assemblies

SIDE BROOM SYSTEM



SIDE BROOM SYSTEM

Kit	Item	Ref. No.	Qty	Description
K4	1		1	Nut, Hex Nyl Loc-Thin 3/8-16
K4	2		2	Nut, Hex Nyl Loc-Thin SS 1/4-20
K1,K4	3		4	Nut, Hex Nyl Loc SS 5/16-18
K1,K4	4		4	Scr- Hex SS 5/16-18 X 1.00
K4	5		2	Wsh-Fit SAE SS 1/2
K1,K4	6		4	Wsh-Fit SAE SS 5/16
K4	7		2	Scr, Hex Hd Loc
K4	8		2	Scr, Pan Phil SS 1/4-20 X .88
K4	9		1	Pin, Cotter Hair .0915 X .375
K4	10		4	Scr- Hex SS 1/2-13 X 1.50
K4	11	56003834	2	Scr-Hex Loc SS 1/2-13 X .75
K1	12		2	Bearing, Pillow Block
	13	56116781	1	Actuator-36v M13 / M18
	14	56511113	1	Side Broom Lift Weldt
	15		1	Right Side Broom Assy
K2	15a		1	Nut Hex Nyl Loc-Thin Ss 3/8-16
K2,K4	15b		2	Nut, Hex Nyl Loc SS 1/2-13
K2,K4	15c		1	Scr- Hex SS 1/4-20 X 1.00
K2,K4	15d		2	Wsh-Fit SAE SS 1/2
K2,K4,K515e			1	Scr, Pan Phil SS 1/4-20 X .75
K2,K4,K515f			2	Nut-Hex Jam SS 1/4-20
K4,K5	15g		1	Pin, Spr .31 X 1.38
K2,K4	15h		2	Scr- Hex SS 1/2-13 X 1.50
K4,K5	15i		4	Scr-Hex Loc Ss M6-1 X 20mm
K2,K4	15j		1	Wsh, Fit SS .378 X 1.000 X .120
K2	15k	56051136	1	Spring, Ext
	15l	56305731	1	Right Thumb Nut Weldt
K2	15m		2	Bushing
K2	15n		1	Bushing
	15o	56509046	1	Side Broom Hub Assy
	15p	56509048	1	Guard-Side Broom
K2	15q	56511652	1	Broom Motor Mount Weldment-Rs
K2	15r	56511195	1	Rt Sb Arm Assy (see pages 96-97)
K6	15s	56384565	1	Motor-42vdc-115rpm-0.4hp-Right M3R
	[]	56384521	1	Sidebroom Motor Brush Kit (for 56384565 & 56384564)
K2	15t		1	Bracket-Sb Lift
K2	15u	56510639	1	Cable Assy-.31 X 4.75
	15v	56510707	1	Broom-Side Poly

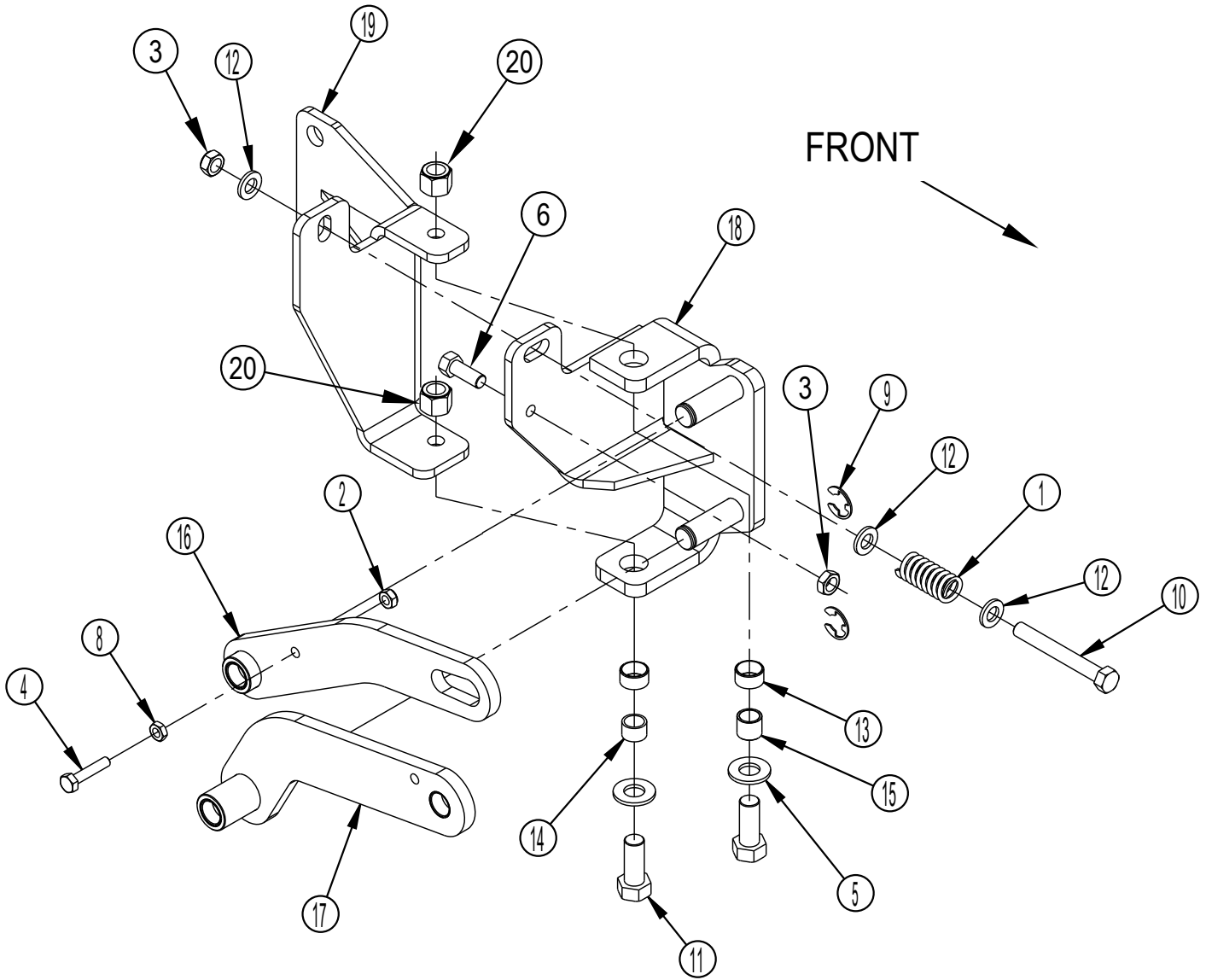
Kit	Item	Ref. No.	Qty	Description
	16		1	Left Side Broom Assy
K3,K4	16a		1	Nut Hex Nyl Loc-Thin Ss 3/8-16
K3	16b		2	Nut, Hex Nyl Loc SS 1/2-13
K3	16c		1	Scr- Hex SS 1/4-20 X 1.00
K3	16d		2	Wsh-Fit SAE SS 1/2
K3,K5	16e		1	Scr, Pan Phil SS 1/4-20 X .75
K3,K5	16f		2	Nut-Hex Jam SS 1/4-20
K5	16g		1	Pin, Spr .31 X 1.38
K3	16h		2	Scr- Hex SS 1/2-13 X 1.50
K5	16i		4	Scr-Hex Loc Ss M6-1 X 20mm
K3,K4	16j		1	Wsh, Fit SS .378 X 1.000 X .120
K3	16k	56051136	1	Spring, Ext
	16l	56305725	1	Left Thumb Nut Weldt
K3	16m		2	Bushing
K3	16n		1	Bushing
	16o	56509048	1	Guard-Side Broom
K3	16p	56511653	1	Broom Motor Mount Weldment-Ls
K3	16q	56511196	1	Lt Sb Arm Assy (see pages 98-99)
	16r	56384564	1	Motor-42vdc-115rpm-0.4hp-Left M3L
	[]	56384521	1	Sidebroom Motor Brush Kit (for 56384565 & 56384564)
K3	16s		1	Bracket-Sb Lift
K3	16t	56510639	1	Cable Assy-.31 X 4.75
	16u	56510680	1	Lt Sb Hub Assy
	16v	56510707	1	Broom-Side Poly
	17	56510954	1	Actuator Bracket Weldt
K4	18		4	Nut-Hex Nyl Loc-Thin SS 1/2-13
	19		2	Wsh-Fit SAE 5/16

Service Kits

K1	56510736	1	Bearing Kit-Side Broom
K2	56510767	1	Bracket Kit-Right Side Broom
K3	56510769	1	Bracket Kit-Left Side Broom
K4	56511883	1	Hardware Kit-Side Broom System
K5	56510822	2	Hardware Kit-Side Broom Assy

[] = Not Shown

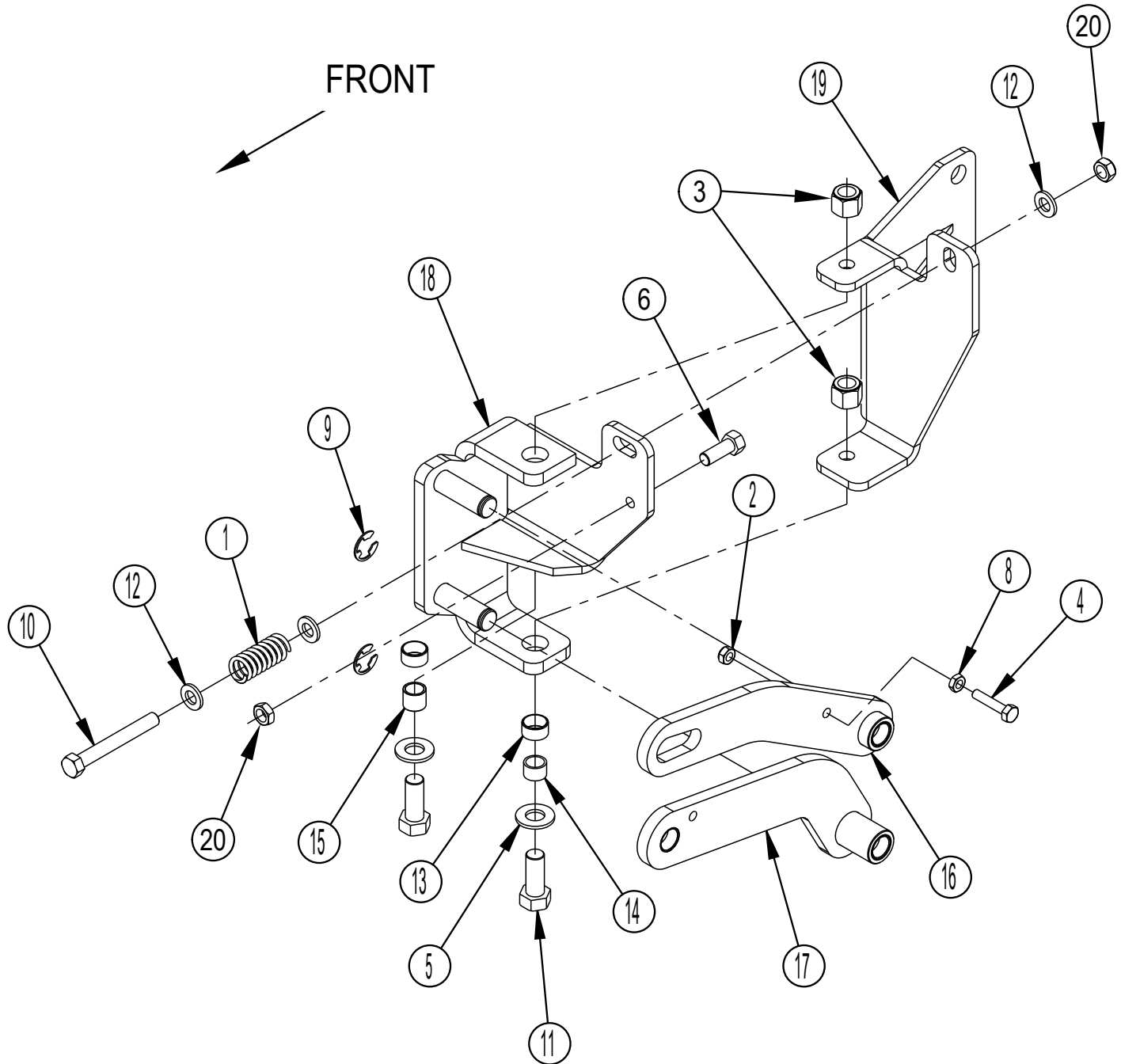
RIGHT SIDE BROOM ARM ASSEMBLY



RIGHT SIDE BROOM ARM ASSEMBLY

Kit	Item	Ref. No.	Qty	Description
		56511195	1	RT SB Arm Assy
	1	56171123	1	Spring, Compression
K1	2		1	Nut, Hex Nyl Loc-Thin SS 1/4-20
	3		2	Nut, Hex Nyl Loc-Thin SS 3/8-16
K1	4		1	Scr- Hex SS 1/4-20 X 1.25
	5		2	Wsh-Flt SAE SS 1/2
	6		1	Scr Hex 3/8-16 X 1.00
	7			Intentionally Omitted
K1	8		1	Nut-Hex Jam SS 1/4-20
K1	9		2	Ring, Ret Ext Type E 0.62 Dia
	10		1	Scr- Hex SS 3/8-16 X 3.00
	11		2	Scr Hex S.S. 1/2-13 X 1.5
	12		3	Wsh-Flt .406x.750x.090
	13		2	Bearing, .719 X .625 X .375
	14		1	Bushing
	15		1	Bushing
K1	16		1	Upr Rt Arm Assy
K1	17		1	Lwr Rt Arm Assy
	18		1	Right Hinge Weldt
	19		1	Right Hinge Weldt
	20		2	Nut Hex Nyl Loc SS 1/2-13
Service Kits				
K1		56382854	1	Arm Assy Kit-Rt

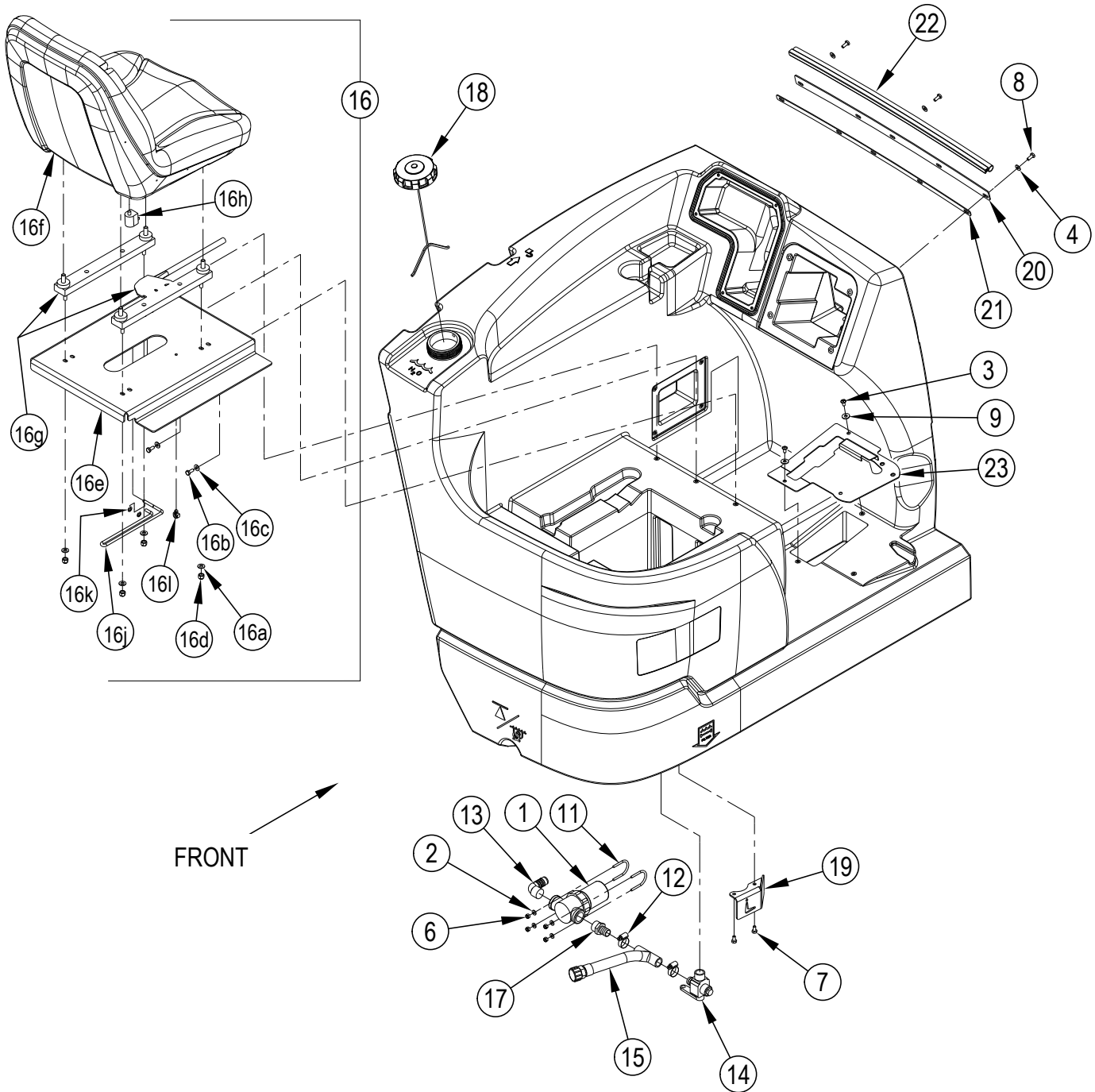
LEFT SIDE BROOM ARM ASSEMBLY



LEFT SIDE BROOM ARM ASSEMBLY

Kit	Item	Ref. No.	Qty	Description
		56511196	1	LT SB Arm Assy
	1	56171123	1	Spring, Compression
K1	2		1	Nut, Hex Nyl Loc-Thin SS 1/4-20
	3		2	Nut Hex Nyl Loc SS 1/2-13
K1	4		1	Scr- Hex SS 1/4-20 X 1.25
	5		2	Wsh-Flt SAE SS 1/2
	6		1	Scr Hex 3/8-16 X 1.00
	7			Intentionally Omitted
K1	8		1	Nut-Hex Jam SS 1/4-20
K1	9		2	Ring, Ret Ext Type E 0.62 Dia
	10		1	Scr- Hex SS 3/8-16 X 3.00
	11		2	Scr Hex S.S. 1/2-13 X 1.5
	12		3	Wsh-Flt .406x.750x.090
	13		2	Bearing, .719 X .625 X .375
	14		1	Bushing
	15		1	Bushing
K1	16		1	Upr Lt Arm Assy
K1	17		1	Lwr Lt Arm Assy
	18		1	Left Hinge Weldt
	19		1	Left Hinge Weldt
	20		2	Nut, Hex Nyl Loc-Thin SS 3/8-16
Service Kits				
K1		56382855	1	Arm Assy Kit-Lt

SOLUTION SYSTEM-1

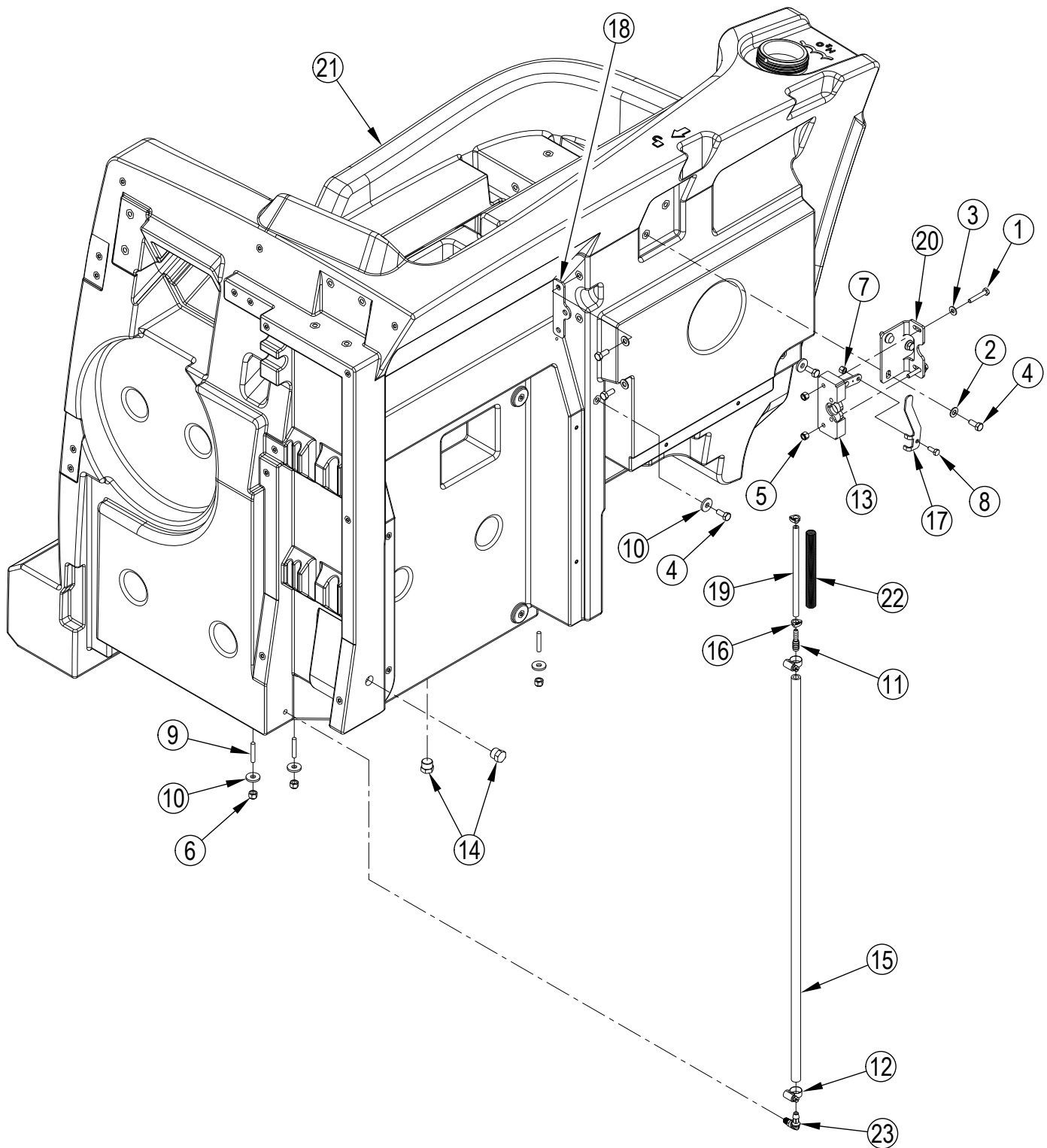


SOLUTION SYSTEM-1

Kit	Item	Ref. No.	Qty	Description
K1	1	56407162	1	Filter
	[]	56384157	1	Gasket-Filter (for 56407162)
K1,K2	2		4	Wsh, Flt SAE #10
K2	3	56003119	4	Scr Pan Phil Ss 1/4-20 X .50
K2	4		3	Wsh, Flt SAE 1/4
K2	5			DELETED
K1,K2	6		4	Nut, Hex Nyl Loc 10-24
K1,K2	7		2	Scr- Hex SS 1/4-20 X .50
K2	8		5	Scr, Hex Hd Loc 1/4-20x.62
K2	9		2	Wsh Flt Std Ss 1/4
	10			DELETED
K1	11	56110318	2	U-Bolt 10-24 X R.69
K1	12		2	Clamp- Hose SAE #10
K1	13	56305545	1	Barb. 90 Elbow 3/4 X 3/4 Npt
K1	14		1	Valve-Solution
K1	15	56383049	1	Hose Assy
	16	56394236	1	Seat Assembly
	16a	56001939	4	Wsh, Flt SAE 5/16
	16b	56002922	3	Scr Hex Loc 1/4-20 X .62
	16c	56002098	3	Wsh, Flt SAE 1/4
	16d	56002701	4	Nut, Hex Nyl Loc 5/16-18
	16e	56394209	1	Seat Mount Weldment
	16f	56383291	1	Seat
	16g	7-72-05005	1	Slide, Seat
	16h	7-82-00050	1	Switch SW3
	16i	56315382	1	Clip Conduit
	16j	56394235	1	Rod-Prop
	16k	56003268	2	Ring Ret Ext Type E Reinf
K1	17	56900292	1	Barb. Adapter 3/4 X 3/4npt
	18	56510442	1	Cap-Extra Vent
K1	19		1	Shield-Valve
	20	56510540	1	Plate-Seal
	21	56510542	1	Plate-Spacer
	22	56510590	1	Bulb Seal
	23	56394201	1	Cover Weldment
	24			DELETED
Service Kits				
K1		56383052	1	Filter Kit-Solution
K2		56511887	1	Hardware Kit-Solution System

[] = Not Shown

SOLUTION SYSTEM-2



SOLUTION SYSTEM-2

Kit	Item	Ref. No.	Qty	Description
K2,K3	1	56001833	2	Scr-Hex 1/4-20 X 1.50
K2,K3	2	56001939	5	Wsh, Flt Sae 5/16
	3	56002098	2	Wsh, Flt Sae 1/4
K2,K3	4	56002667	7	Scr-Hex 5/16-18 X .75
K2,K3	5	56002708	2	Nut, Hex Nyl Loc 1/4-20
K2	6	56002856	3	Nut-Hex Nyl Loc Ss 5/16-18
	7	56003426	1	Nut, Hex Nyl Loc Ss M6-1
K2,K3	8	56003431	1	Scr-Hex Ss M6-1 X 16mm
K2	9	56003665	3	Threaded Stud, Stainless
K2	10	56009122	5	Wsh, Flt .344 X .938 X .125
K3	11	56104312	1	Reducer Barb
	12	56219932	2	Clamp- Hose Sae #6
K3	13	56304827	1	Latch, Rh
	14	56305547	2	Plug, 1/2 Hex Pipe
	15	56317083	1	Hose Polybraid
	16	56384956	2	Clamp-Hose
K3	17	56509362	1	Handle-Recovery Latch
	18	56509363	1	Hook-Tether
	19	56510659	1	Tube-Tygon
K3	20	56511123	1	Bracket-Latch Mount
	21#	56511578	1	Tank-Solution NOTE 1
	21#	56394200	1	Tank-Solution NOTE 2
	22	56511954	1	Loom-Corrugated-1/2x6
	23	56511955	1	Barb-90-Elbow-3/8x1/8 Npt

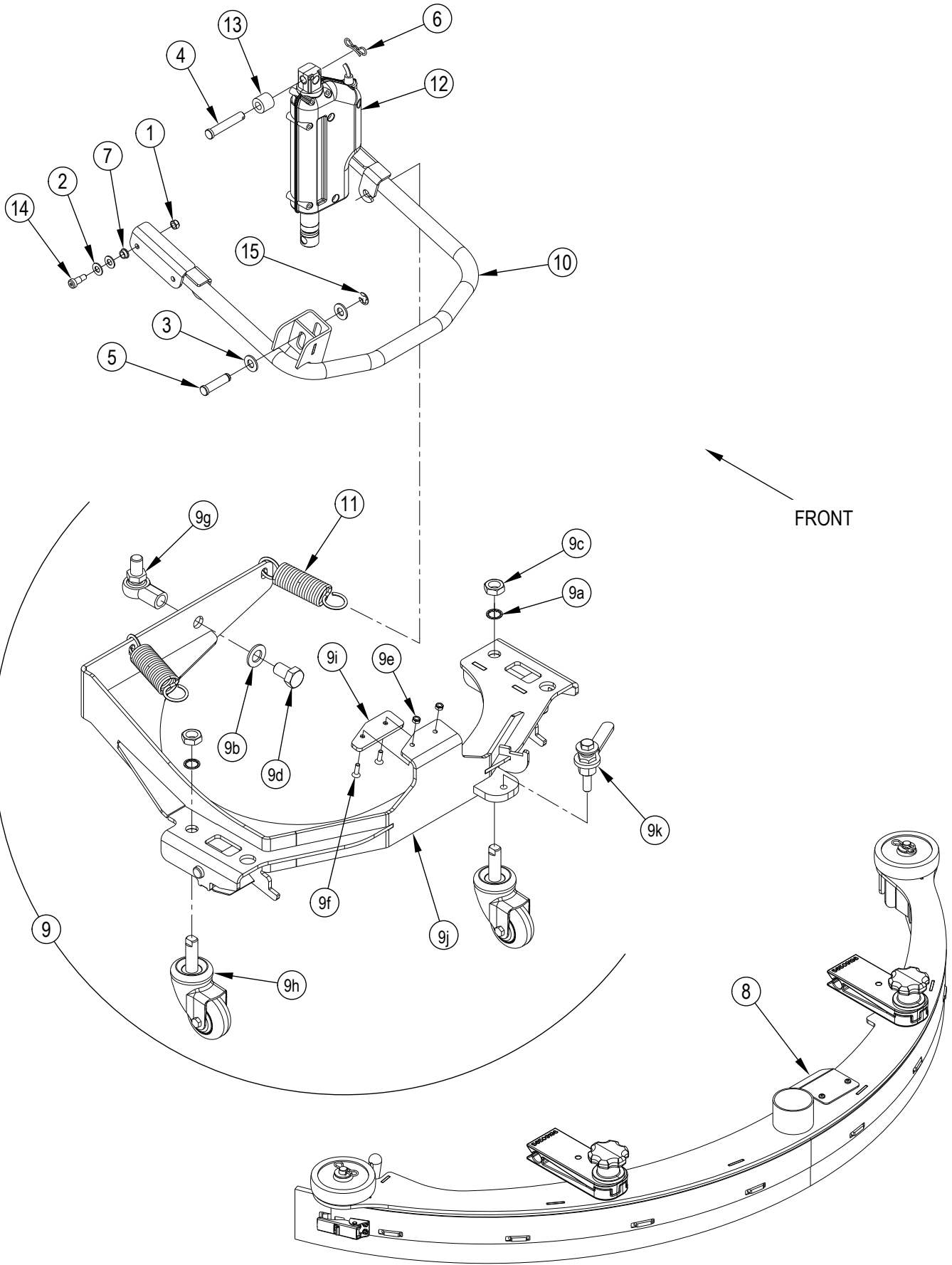
Service Kits

K2	56511887	1	Hardware Kit-Solution System
K3	56510594	1	Latch Kit-Rec Tank

NOTE 1:# All machines built before serial number 1000071239 use the old Solution Tank 56511578.

NOTE 2:# All machines built after serial number 1000071238 use the new Solution Tank 56394200.

SQUEEGEE SYSTEM



FRONT

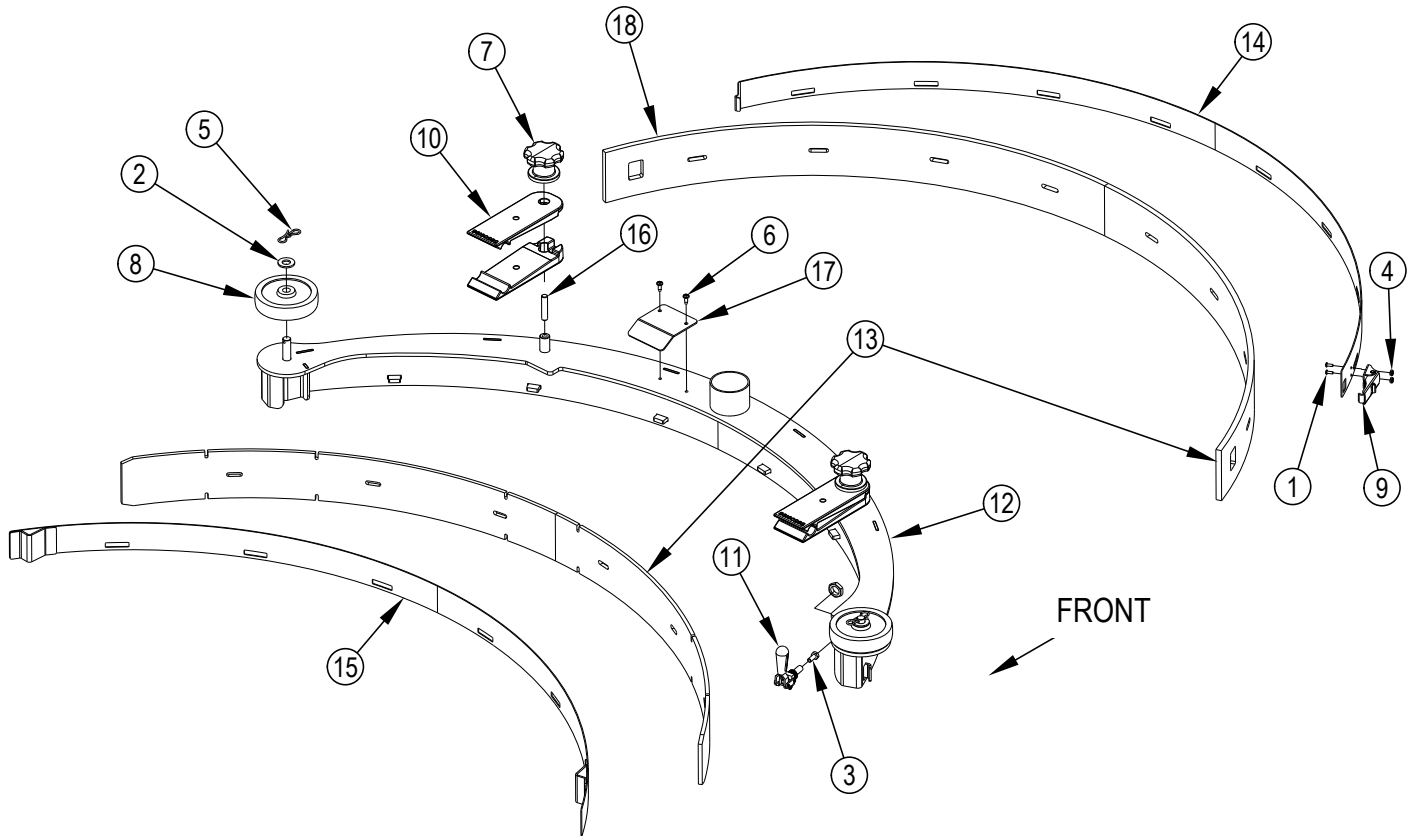
SQUEEGEE SYSTEM

Kit	Item	Ref. No.	Qty	Description
K1	1		2	Nut, Hex Nyl Loc-Thin SS 5/16-18
K1	2		4	Wsh-Flt SAE SS 3/8
K1,K2	3		2	Wsh-Flt SAE SS 1/2
K2	4		1	Pin-Clevis .50 X 2.75
K2	5		1	Pin-Clevis-Grooved-SS .5 x 2.00
K2	6		1	Pin- Bow-Tie Cotter 7/16 - 1/2
K1	7		2	Bearing, Flange
	8	56511216	1	Assembly-Squeegee Tool (includes Linatex Rubber Blades) (see pages 106-107)
	9		1	Assembly-Squeegee Support
K1,K3	9a		2	Washer, Int. Shake Pr
K1,K5	9b		1	Wsh, Flt SAE 3/4
K1,K3	9c			Nut Hex Jam 3/4-10
K1,K5	9d		1	Scr, Hex 3/4-16 X 1.25 Grade8
K1,K4	9e		2	Nut, Hex Nyl Loc-Thin SS 1/4-20
K1,K4	9f		2	Scr-Flt Phil SS 1/4-20 X .88
K5	9g		1	Rod End
K3	9h		2	Caster-Squeegee
K4	9i		1	Pad-Squeegee Lift
	9j	56511280	1	Support Weldment
	9k	56510168	1	Handle-Adjustment
	10	56509241	1	Arm-Squeegee Lift
	11	56509246	2	Spring-Extension
	12	56511259	1	Actuator-Lin-36v-89mm Stroke M16
K2	13		1	Spacer-.510 X 1 X .88
K1	14		2	3/8 Shoulder Screw 1/2lg 5/16-18thrd
K2	15		1	Retaining Ring-E Style-SS .5

Service Kits

K1	56511881	1	Hardware Kit-Squeegee Sys
K2	56510768	1	Hardware Kit-Squeegee Actuator
K3	56510817	1	Caster Kit-Squeegee
K4	56510828	1	Pad Kit-Squeegee Lift
K5	56510829	1	Rod End-Squeegee

SQUEEGEE ASSEMBLY



SQUEEGEE ASSEMBLY

Kit	Item	Ref. No.	Qty	Description
		56511216	1	Assembly-Squeegee Tool
K1,K3	1		2	Scr-Pan Phil SS 6-32 X .38
K4	2		2	Wsh-Fit SAE SS 1/2
K1,K5	3		1	Scr-Hex Loc SS 1/4-20 X .62
K1,K3	4		2	Nut-Hex Nyl Loc-Thin SS 6-32
K1,K3,K45			2	Pin-Bow-Tie Cotter 7/16 - 1/2
K1,K5	6		2	Scr Pan Phil Loc Ss 10-24 X .50
	7	56109704	2	Knob-Squeegee
K4	8	56111639	2	Wheel
K3	9		1	Latch Assembly
K2	10		4	Clip-Squeegee
	11	56509203	1	Clamp-Push Pull
	12		1	Squeegee Weldment NOTE 2
	13	56510371	1	Blade Kit-Sqgee-Linatex NOTE 1
	14	56509219	1	Strap-Squeegee
	15	56509220	1	Strap-Weldment
	16	56510151	2	Stud - 3/8-16x1.75
	17	56510153	1	Plate-Adjustment
	18	56394403	1	Blade-Sq Rear-Linatex NOTE 3
		56394404	1	Blade-Sq Rear-Gum NOTE 3
		56394405	1	Blade-Sq Rear-Pu NOTE 3
Squeegee Blade Kits				
		56510371	1	Blade Kit-Sqgee-Linatex NOTE 1
	*	56510372	1	Blade Kit-Squeegee Gum NOTE 1
	*	56510373	1	Blade Kit-Squeegee PU NOTE 1
Service Kits				
K1	56511881		1	Hardware Kit-Squeegee Sys
K2	56510830		1	Clip Kit-Squeegee
K3	56510831		1	Latch Kit-Squeegee
K4	56510832		1	Wheel Kit-Squeegee
K5	56510833		1	Hardware Kit-Squeegee Tool

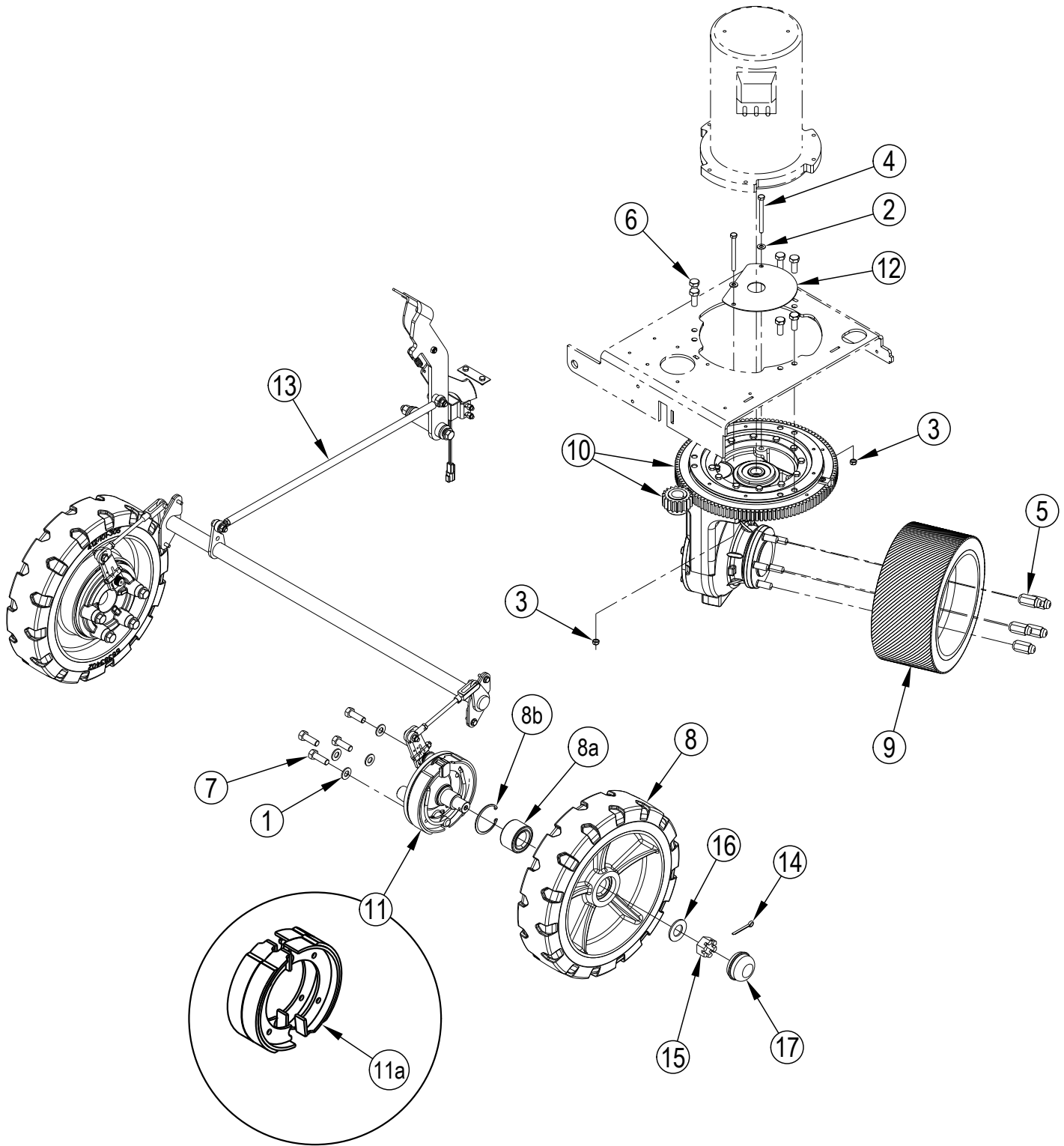
* = Optional, Not Included

NOTE 1: All squeegee blade kits include both front and rear squeegee blades.

NOTE 2: The squeegee weldment is not available for sale separately. If you need to replace it please order the entire squeegee assembly 56511216.

NOTE 3: If you need to replace the rear squeegee blades, they are available for sale separately.

WHEEL SYSTEM



WHEEL SYSTEM

Kit	Item	Ref. No.	Qty	Description
K1	1		8	Wsh-Flt Sae 1/2
K1,K4	2		2	Wsh, Flt Sae 5/16
K1,K4	3		2	Nut, Hex Nyl Loc-Thin 5/16-18
K1,K4	4		2	Scr-Hex 5/16-18 X 3.50
K1,K3	5		5	Nut Lug M14x1.5
K1	6		6	Scr, Hex Loc M12-1.75 X 30mm
K1	7		8	Scr, Hex Loc 1/2-20 X 1.50 Grade 8
	8	56383402	2	Wheel-Mold-On 16.2x4
	8a	56509532	1	Bearing-Wheel (for 56383402)
	8b	56509533	1	Ring-Snap (for 56383402)
	9	56509157	1	Wheel-Drive 310x140
K2	10	56509195	1	Gearbox-Traction Drive
	11	56509664	2	Brake & Spindle Assembly
K4	12		1	Shield-Splash
	13		1	Brake Linkage Assy (see pages 110-111)
	13a	56510762	1	Brake Shoe Kit (for 56509664 contains 4 brake shoes)
	14	2-00-02436	2	Pin, Cotter
	15	2-00-05026	2	1" X 14 Slotted Nut
	16	56004012	2	Washer, Spacer
	17	8-11-00030	2	Grease Cap

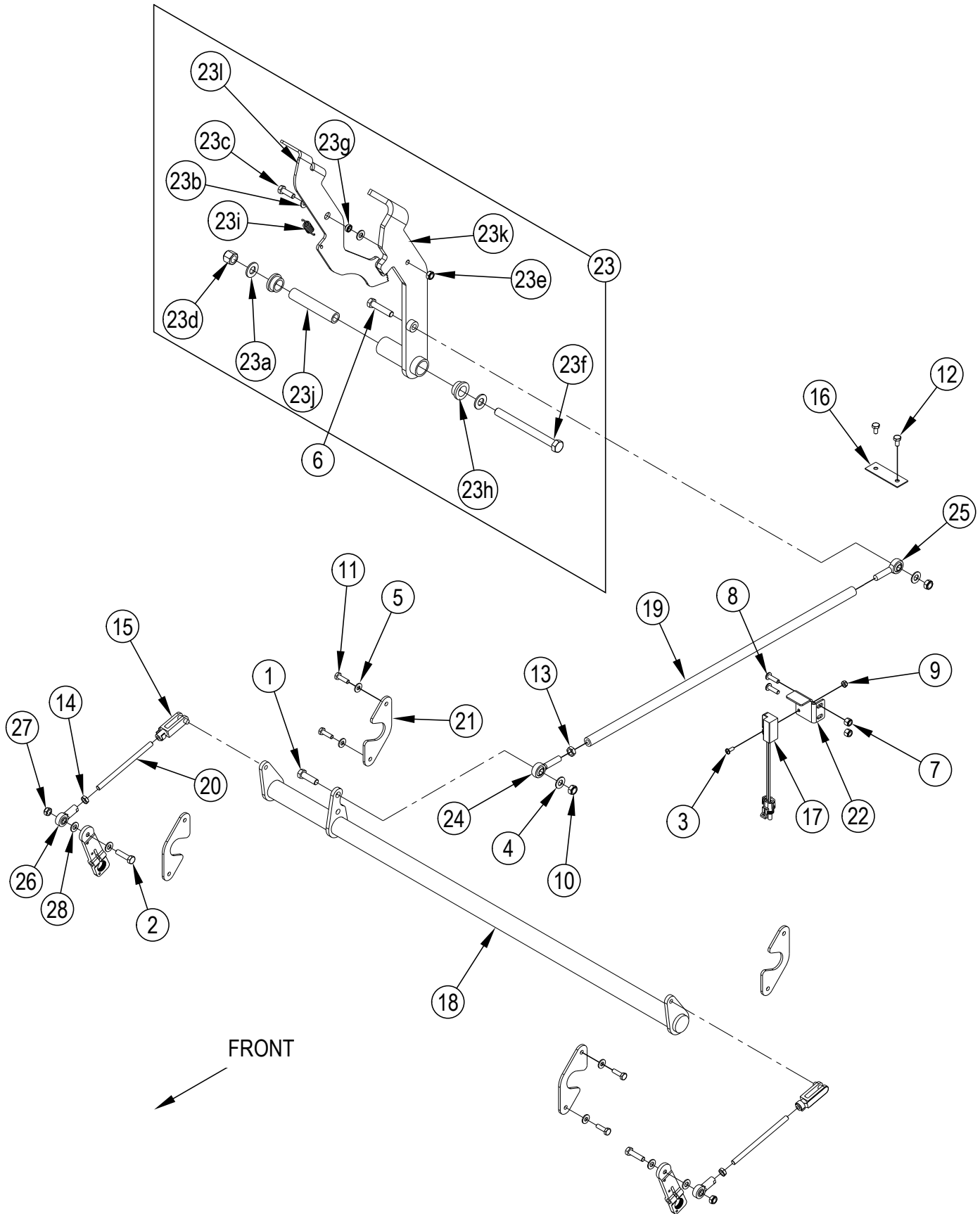
Service Kits

K1	56511880	1	Hardware kit-Wheel System
K2	56510825	1	Ring/Pinion Gear Kit-Steering (for 56509195)
K3	56510738	1	Lug Nut Kit
K4	56510737	1	Motor Kit-Drive

[] = Not Shown

* = Optional, Not Included

WHEEL SYSTEM-BRAKE LINKAGE ASSEMBLY



WHEEL SYSTEM-BRAKE LINKAGE ASSEMBLY

Kit	Item	Ref. No.	Qty	Description
K2	1		1	Scr. Hex 3/8-16 X 1.25
K2	2		2	Scr Hex 5/16-18 X 1.25
K2	3		1	Scr-Pan Phil 10-24 X .50
K1,K2	4		2	Wsh. Flt SAE 3/8
K2	5		4	Wsh. Flt SAE 1/4
K1,K2	6		1	Scr. Hex 3/8-16 X 1.75
K2	7		2	Nut, Hex Nyl Loc 1/4-20
K2	8		2	Scr-Pan Phil 1/4-20 X .88
K2	9		1	Nut, Hex Nyl Loc-Thin 10-24
K1,K2	10		2	Nut, Hex Nyl Loc-Thin 3/8-16
K2	11		4	Scr,Hex Hd Loc 1/4-20x.88
K1,K2	12		2	Scr, Hex Thd Form 1/4-20 X .50
K2	13		1	Nut, Hex Jam 3/8-24
K2	14		2	Nut Hex Jam 5/16-24
	15	56416089	2	Clevis Assembly
K1	16	56304543	1	Catch, Brake Lock
	17	56511830	1	Sensor-Proximity SW9
	18	56509365	1	Weldt-Brake Bar
	19	56509368	1	Rod-Brake
	20	56509369	2	Rod-Brake
	21	56509370	4	Pivot-Brake
	22	56511139	1	Bracket-Switch Mount
K1	23		1	Brake Pedal Assy
K1	23a		2	Wsh-Flt SAE 1/2
K1	23b		2	Wsh, Flt SAE 5/16
K1	23c		1	Scr. Hex 5/16-18 X 1.00
K1	23d		1	Nut-Hex Nyl Loc 1/2-13
K1	23e		1	Nut, Hex Nyl Loc-Thin 5/16-18
K1	23f		1	Scr. Hex 1/2-13 X 5.50
K1	23g		1	Bushing .323 X .500 X .180
K1	23h		2	Bearing, Fl 1.000x.750x.500
K1	23i		1	Spring, Extension
K1	23j		1	Bushing-.520 X .750 X 3.995
K1	23k		1	Brake Pedal Weldt
K1	23l		1	Pedal-Park Brake
	24	2-00-06016	1	Rod End, 3/8-24 Rh
	25	2-00-06017	1	Rod End, 3/8-24 Left Hand
	26	56418478	2	Rod End .31
K2	27		2	Nut Hex Nyl Loc-Thin 5/16-18
K2	28		4	Wsh Flt SAE 5/16

Service Kits

K1	56510786	1	Brake Pedal Kit
K2	56510785	1	Hardware Kit-Brake Linkage

LADDER DIAGRAM-1

Kit	Item	Ref. No.	Qty	Description
	A1	56511588	1	<u>MAIN CONTROLER</u>
	BT1	NA	1	Battery 36V 770 Amp HR NOTE 1
		NA	1	Battery 36V NOTE 2
	BT2	56380449	1	Battery 12V Wet NOTE 1
	CB1	56315255	1	Circuit Breaker-5 Amp (Battery)
	CB2	56509623	1	Circuit Breaker-25 Amp (VACC2)
	CB3	56509623	1	Circuit Breaker-15 Amp (Power Outlet 12V)
	F1	56303297	1	Fuse, 400 Amp (Main Fuse)
	F2	287020	1	Fuse, 20 Amp (12V from Starter)
	G1	56511663	1	Alternator 42 Vdc, 310 A (System power)
	K1	40892A	1	Main Relay
	M25	56511864	1	Pump, Fuel (for Gasoline engine)
	R1	56511257	1	Fuel Level Sender (Gasoline and Diesel fuel level)
	SW1	56111109	1	Switch Assembly, Key (Ignition Switch)
	SW2	56104247	1	Disconnect, Emergency (Emergency Stop)
	SW3	7-82-00050	1	Switch-Seat
	SW4	56511830	1	Switch-Battery Interlock (Battery Interlock)
	SW5	56418381	1	Switch-N.C. Pressure (Signals low/empty LPG tank)
	Y1	NA	1	Clutch-High Pressure Pump (part of High Pressure Pump Assy 56509812 / Optional)

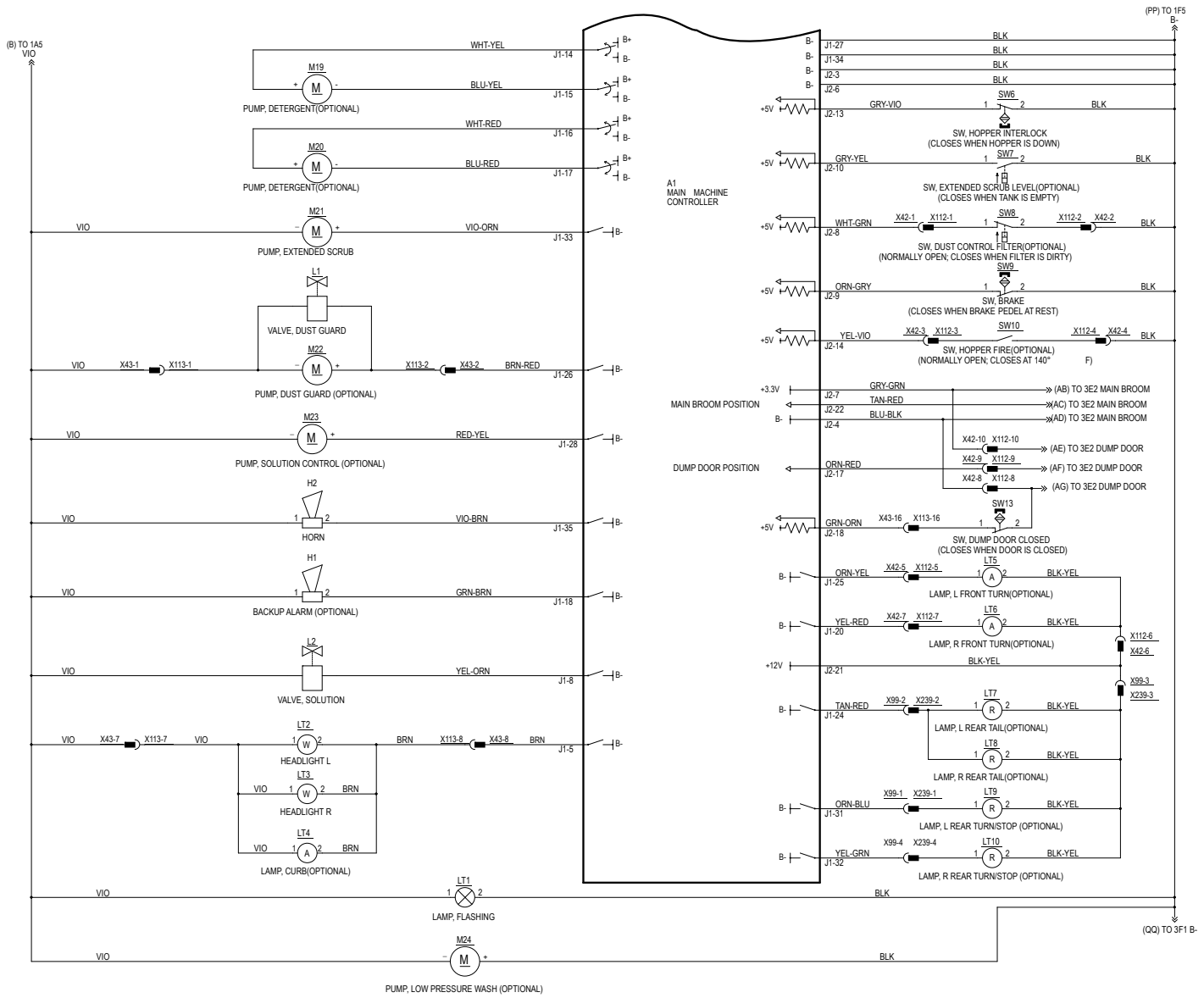
NOTE 1: These items are only used on LPG and diesel models.

NOTE 2: Only used on battery models.

Color Codes

BLK	Black
BLU	Blue
BRN	Brown
GRA	Gray
GRN	Green
ORN	Orange
PINK	Pink
RED	Red
TAN	Tan
VIO	Violet
WHT	White
YEL	Yellow

LADDER DIAGRAM-2



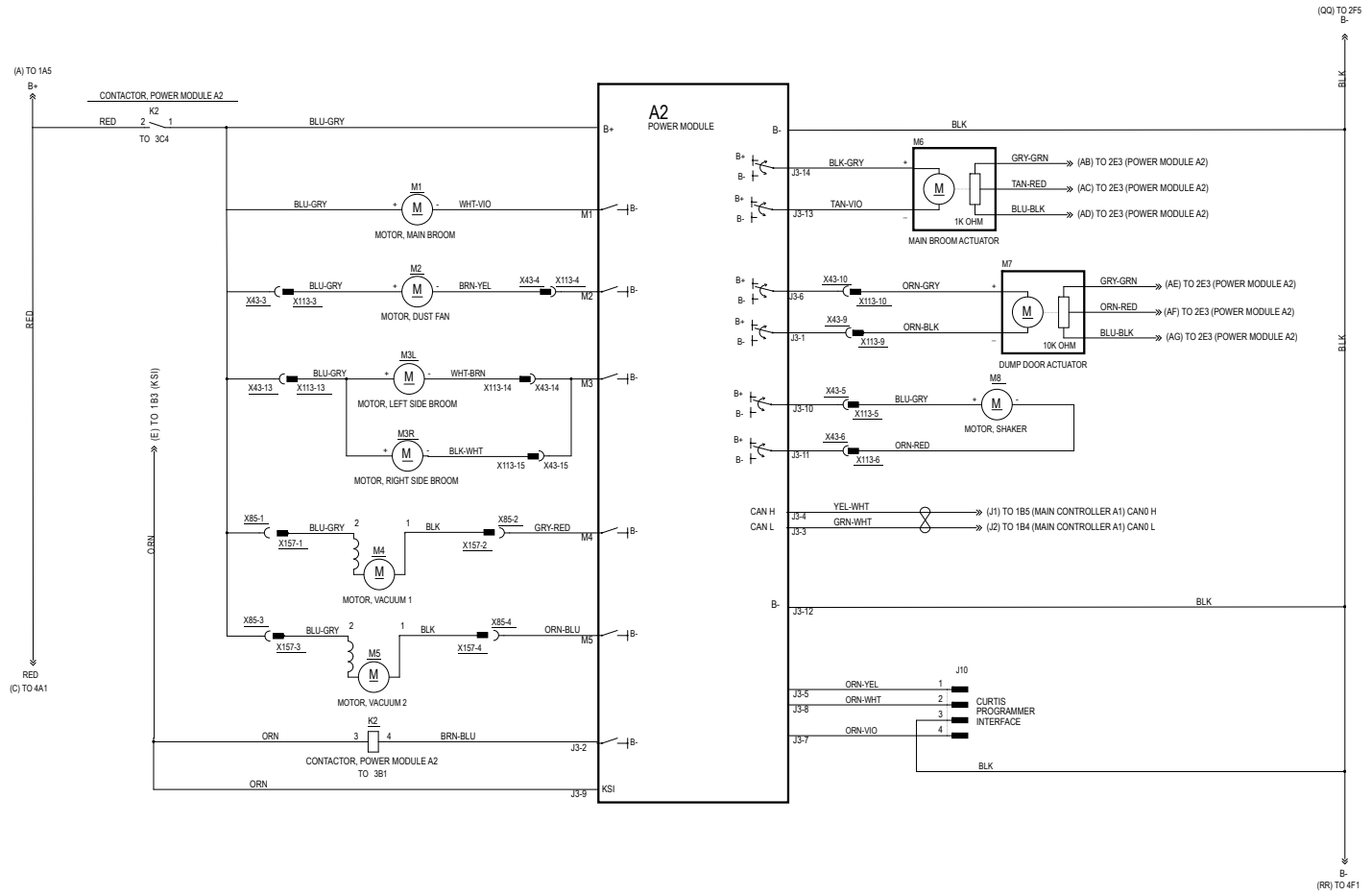
LADDER DIAGRAM-2

Kit	Item	Ref. No.	Qty	Description
	A1	56511588	1	Main Controler
	H1	56409232	1	Backup Alarm
	H2	56394040	1	Horn 36V
	L1	56397216	1	Solenoid Valve Assy (Dust Guard / Optional)
	L2	56384490	1	Valve, 36V Solenoid (Solution)
	LT1	56510893	1	Beacon, Warning (Optional)
	LT2	56383032	1	Light Assy (Left)
	LT3	56383032	1	Light Assy (Right)
	LT4		1	Curb Light (Optional)
	LT5	56509559	1	Light-Turn Signal (Left Front / Optional)
	LT6	56509559	1	Light-Turn Signal (Right Front / Optional)
	LT7	56510280	1	Left Tail Light (Optional)
	LT8	56510280	1	Right Tail Light (Optional)
	LT9	56511857	1	Light Red (Left Rear Turn Signal / Optional)
	LT10	56511857	1	Light Red (Right Rear Turn Signal / Optional)
	M19	56110742	1	Pump Detergent 12V (EcoFlex / Optional)
	M20	56110742	1	Pump Detergent 12V (EcoFlex / Optional)
	M21	56511834	1	Pump 36V (Extended Scrub Pump)
	M22	56116767	1	Pump-36vdc (Dust Guard / Optional)
	M23	56511834	1	Pump 36V(EcoFlex / Optional)
	M24	56511835	1	Pump Assy (Spray Wand Kit / Optional)
	SW6	56511830	1	Sensor-Proximity (Hopper Interlock)
	SW7	56509932	1	Switch-Extended Scrub Level (Optional)
	SW8	56509761	1	Switch-Vacuum (Plugged Filter Kit / Optional)
	SW9	56511830	1	Sensor-Proximity (Brake Switch)
	SW10	56418405	1	Switch-Temperature (Hopper Temp Sensor Kit)
	SW13	56511830	1	Sensor, Proximity (Switch, Dump Door Closed)

Color Codes

BLK	Black
BLU	Blue
BRN	Brown
GRA	Gray
GRN	Green
ORN	Orange
PINK	Pink
RED	Red
TAN	Tan
VIO	Violet
WHT	White
YEL	Yellow

LADDER DIAGRAM-3



LADDER DIAGRAM-3

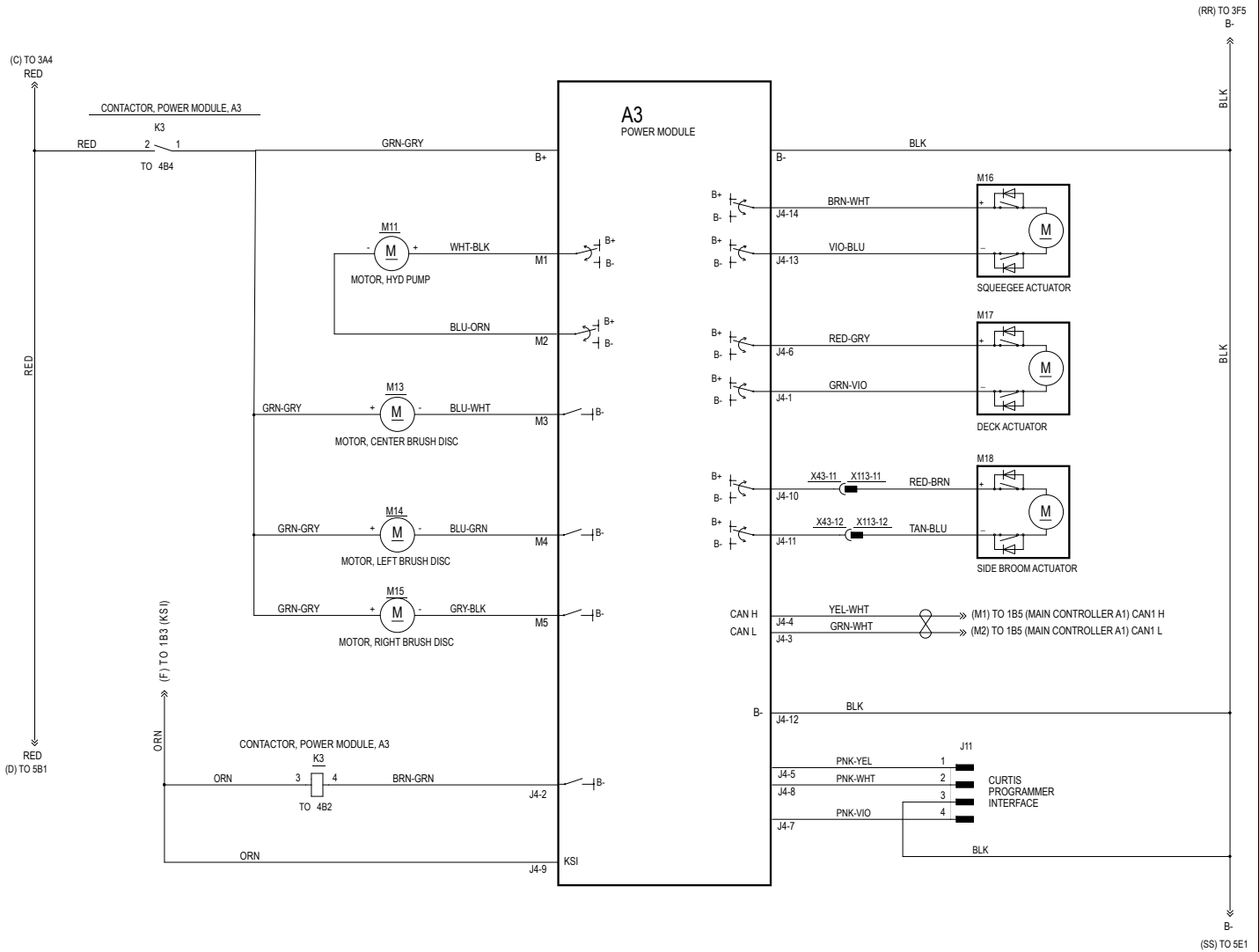
Kit	Item	Ref. No.	Qty	Description
	A2	56511622	1	Power Module
	J10	NA	1	Curtis Programmer Interface
	K2	56395453	1	Contactor 36V (Power Module A2)
	M1	56510740	1	Motor Kit-Broom
	[]	56422152	1	Motor Brush Kit (for 56510740)
	M2	33015359	1	Vac Fan 36v (Dust control System)
	M3R	56384565	1	Motor-42vdc-115rpm-0.4hp-Right
	[]	56384521	1	Sidebroom Motor Brush Kit (for 56384565 & 56384564)
	M3L	56384564	1	Motor-42vdc-115rpm-0.4hp-Left
	[]	56384521	1	Sidebroom Motor Brush Kit (for 56384565 & 56384564)
	M4	56511400	1	Vac Motor Assy (Solution recovery)
	M5	56511400	1	Vac Motor Assy (Solution recovery)
	M6	56511260	1	Actuator-Lin-36v-51mm Stroke (Main Broom Actuator)
	M7	56511759	1	Actuator-36v (Dump Door Actuator Motor)
	M8	56511366	1	Motor-36vdc-Filter Shaker (Shaker Motor)

[] = Not Shown

Color Codes

BLK	Black
BLU	Blue
BRN	Brown
GRA	Gray
GRN	Green
ORN	Orange
PINK	Pink
RED	Red
TAN	Tan
VIO	Violet
WHT	White
YEL	Yellow

LADDER DIAGRAM-4



LADDER DIAGRAM-4

<u>Kit</u>	<u>Item</u>	<u>Ref. No.</u>	<u>Qty</u>	<u>Description</u>
	A3	56511622	1	Power Module
	J11	NA	1	Curtis Programmer Interface
	K3	56395453	1	Contactor 36V (Power Module A3)
	M11	56511831	1	Motor-36v-3669rpm-0.55hp (Hydraulic Pump Motor)
	M13	56511937	1	Gearmotor Assy-Center M13 / M14
	[]	56422152	1	Brush Kit (for 56511937 Amer Scrub Motor Assembly)
	[]	56510763	1	Brush Kit-Motor (For Imperial Scrub motor Assembly) NOTE 1
	M14	56511935	1	Gearmotor Assy-Left M13 / M14
	[]	56422152	1	Brush Kit (for 56511935 Amer Scrub Motor Assembly)
	[]	56510763	1	Brush Kit-Motor (For Imperial Scrub motor Assembly) NOTE 1
	M15	56511936	1	Gearmotor Assy-Right M15
	[]	56422152	1	Brush Kit (for 56511936 Amer Scrub Motor Assembly)
	[]	56510763	1	Brush Kit-Motor (For Imperial Scrub motor Assembly) NOTE 1
	M16	56511259	1	Actuator-Lin-36v-89mm Stroke (Squeegee Actuator)
	M17	56511263	1	Actuator-Lin-36v-152 Mm Stroke (Scrub Deck Actuator)
	M18	56116781	1	Actuator-Squeegee (Side Broom Actuator)

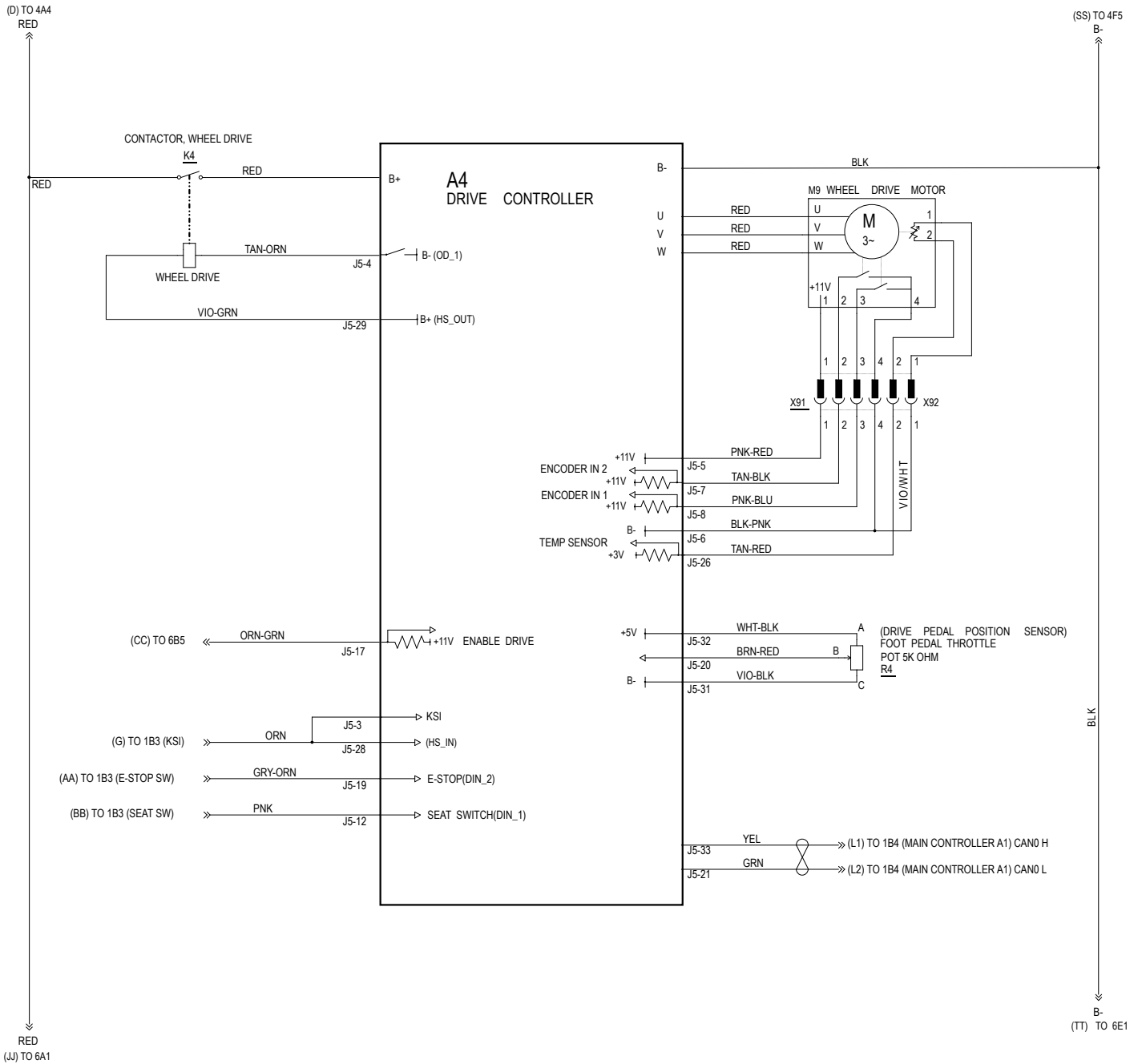
[] = Not Shown

NOTE 1: Machines with Imperial Scrub Motor Assemblies require Brush Motor Kits 56510763.
See Detail 1 on **SCRUBBING SYSTEM-2** to identify the style of motor that requires this Brush Kit.

Color Codes

BLK	Black
BLU	Blue
BRN	Brown
GRA	Gray
GRN	Green
ORN	Orange
PINK	Pink
RED	Red
TAN	Tan
VIO	Violet
WHT	White
YEL	Yellow

LADDER DIAGRAM-5



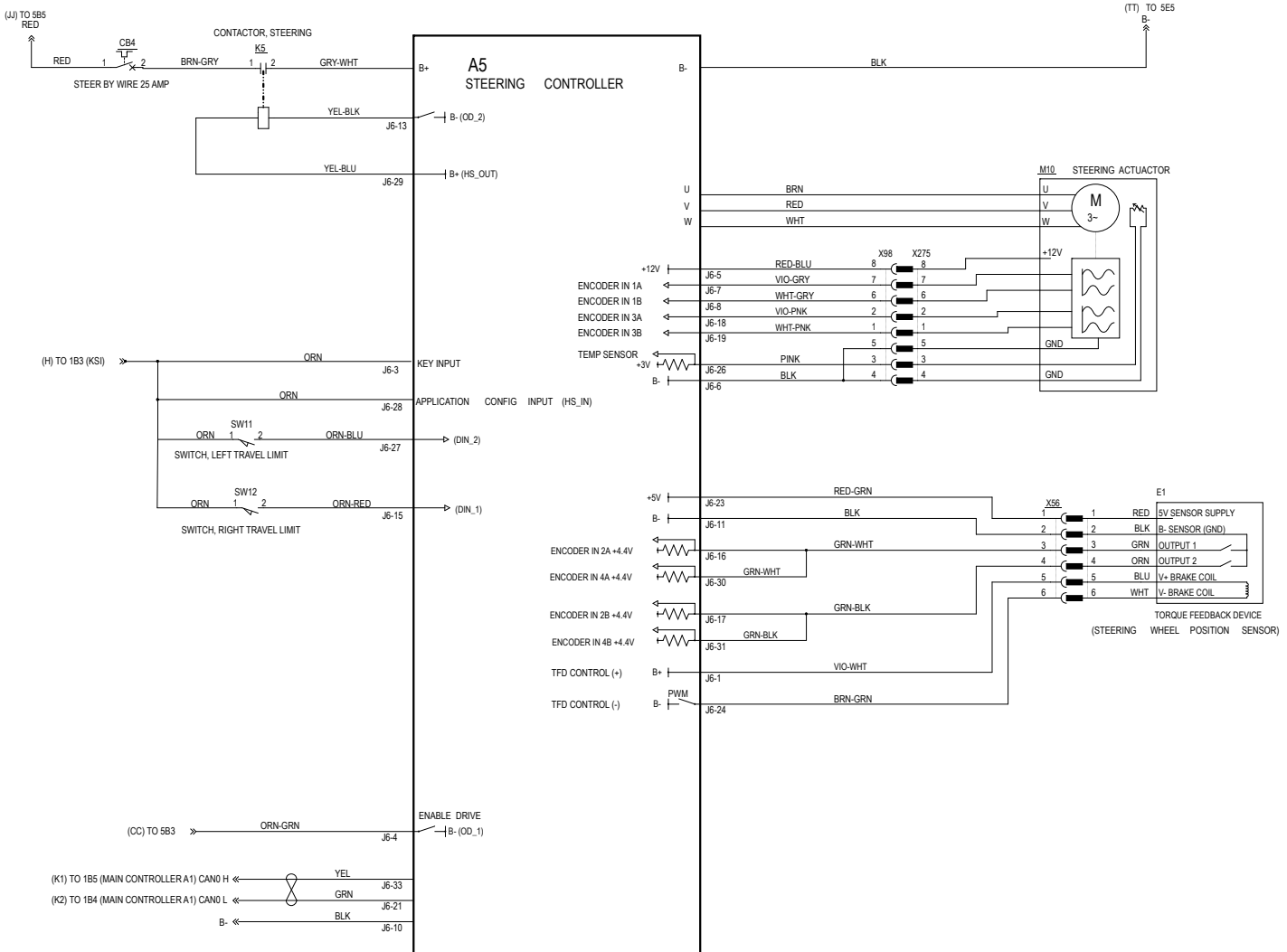
LADDER DIAGRAM-5

Kit	Item	Ref. No.	Qty	Description
	A4	56511698	1	Controller, Motor Speed (Drive Controller)
	K4	56395453	1	CONTACTOR, 36V (Drive Contactor)
	M9	56509168	1	Motor, Traction – Ac (Motor, Wheel Drive)
	R4	56601052	1	Foot Pedal Assy (Traction throttle)

Color Codes

BLK	Black
BLU	Blue
BRN	Brown
GRA	Gray
GRN	Green
ORN	Orange
PINK	Pink
RED	Red
TAN	Tan
VIO	Violet
WHT	White
YEL	Yellow

LADDER DIAGRAM-6



LADDER DIAGRAM-6

Kit	Item	Ref. No.	Qty	Description
	A5	56511598	1	Controller-Steering Motor (Steering Controller)
	CB4	56315255	1	Circuit Breaker-25 Amp (Steering CB)
	E1	56511615	1	Torque Feedback Device (Steering Wheel Sensor)
	K5	40892A	1	Relay (Steering Relay)
	M10	56511657	1	Motor-Steering (Steer Actuator)
	SW11	56511830	1	Sensor, Proximity (Switch, Left Travel Limit)
	SW12	56511830	1	Sensor, Proximity (Switch, Right Travel Limit)

LADDER DIAGRAM-KUBOTA DIESEL ENGINE SYSTEM

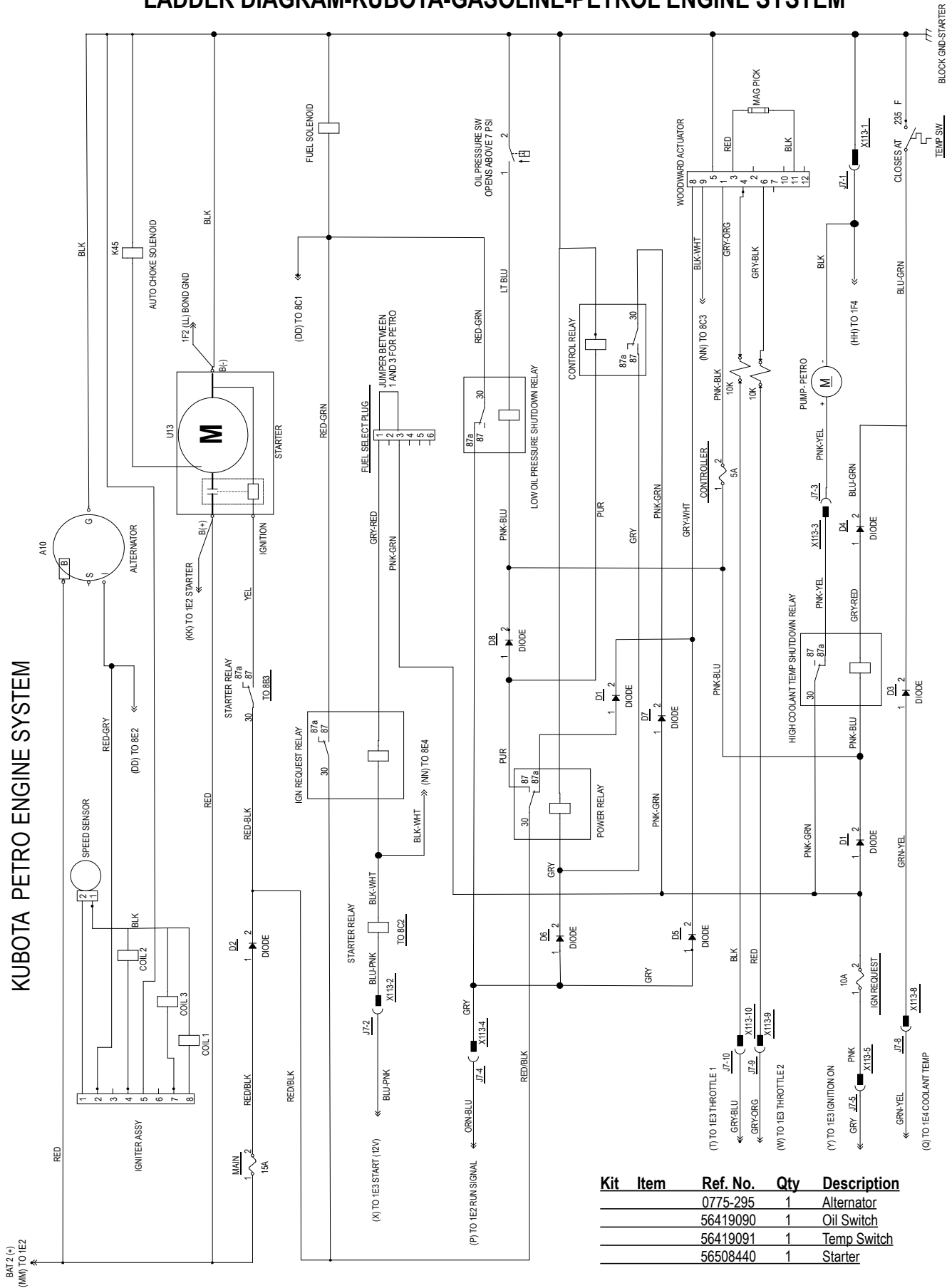
Kit	Item	Ref. No.	Qty	Description
	B4	NA	1	Magnetic Pick-Up (part of Apecs 3000 Governor 56510350)
	DV6	56419089	1	Starter
	E1	NA	1	Glow Plug
	E2	NA	1	Glow Plug
	E3	NA	1	Glow Plug
	G2	56510385	1	Alternator
	K13	56110423	1	Relay-SPST 12V 75A
		56510350	1	Apecs 3000 Governor
	M15	NA	1	Actuator (part of Apecs 3000 Governor 56510350)
	M20	56508355	1	Fuel Pump
	S18	56419091	1	Switch-Coolant Temp
	S19	56508444	1	Switch-Oil Pressure

Color Codes

BLK	Black
BLU	Blue
BRN	Brown
GRA	Gray
GRN	Green
ORN	Orange
PINK	Pink
RED	Red
TAN	Tan
VIO	Violet
WHT	White
YEL	Yellow

LADDER DIAGRAM-KUBOTA-GASOLINE-PETROL ENGINE SYSTEM

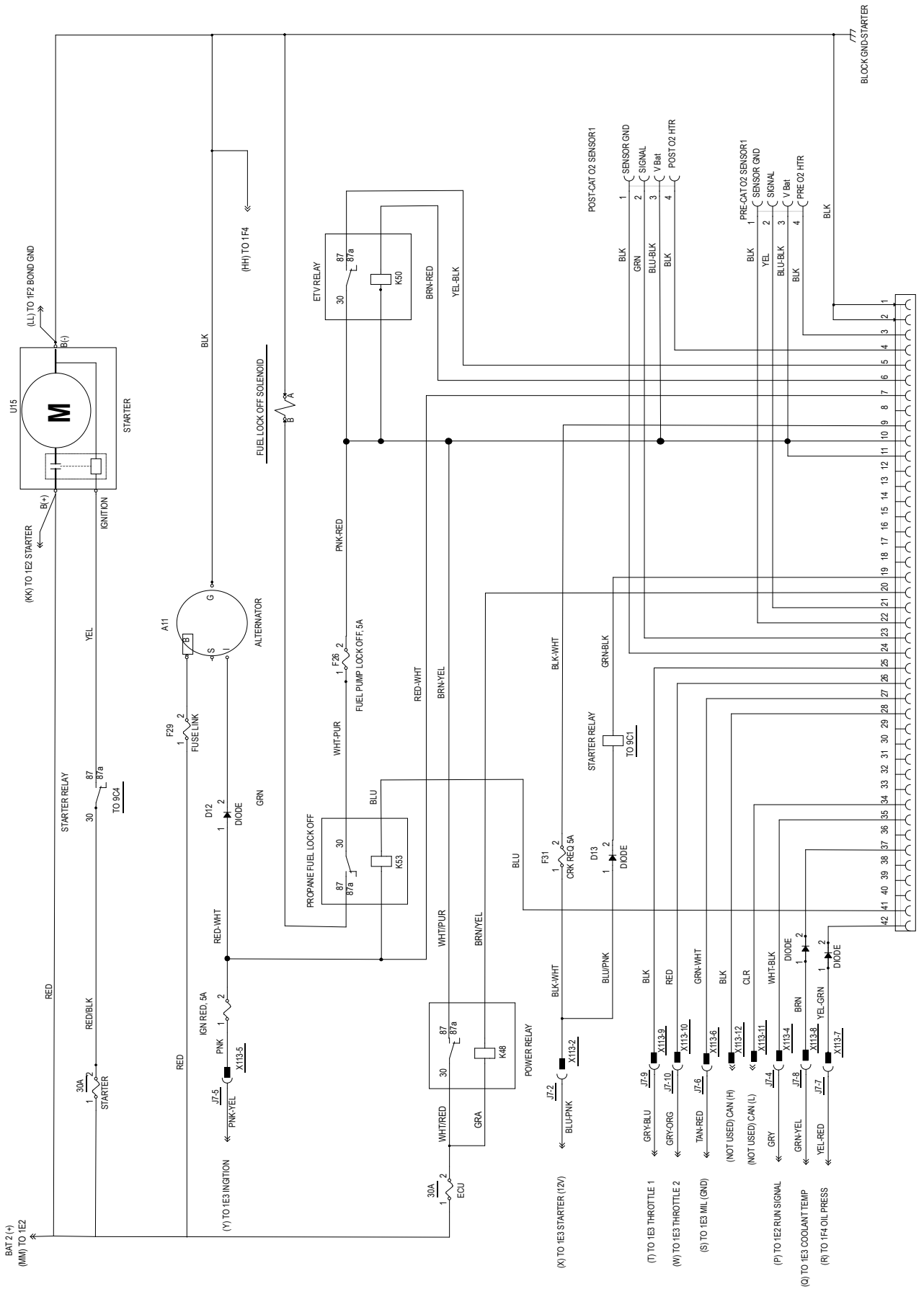
KUBOTA PETRO ENGINE SYSTEM



Kit	Item	Ref. No.	Qty	Description
		0775-295	1	Alternator
		56419090	1	Oil Switch
		56419091	1	Temp Switch
		56508440	1	Starter

LADDER DIAGRAM-KUBOTA-LEV ENGINE SYSTEM-1

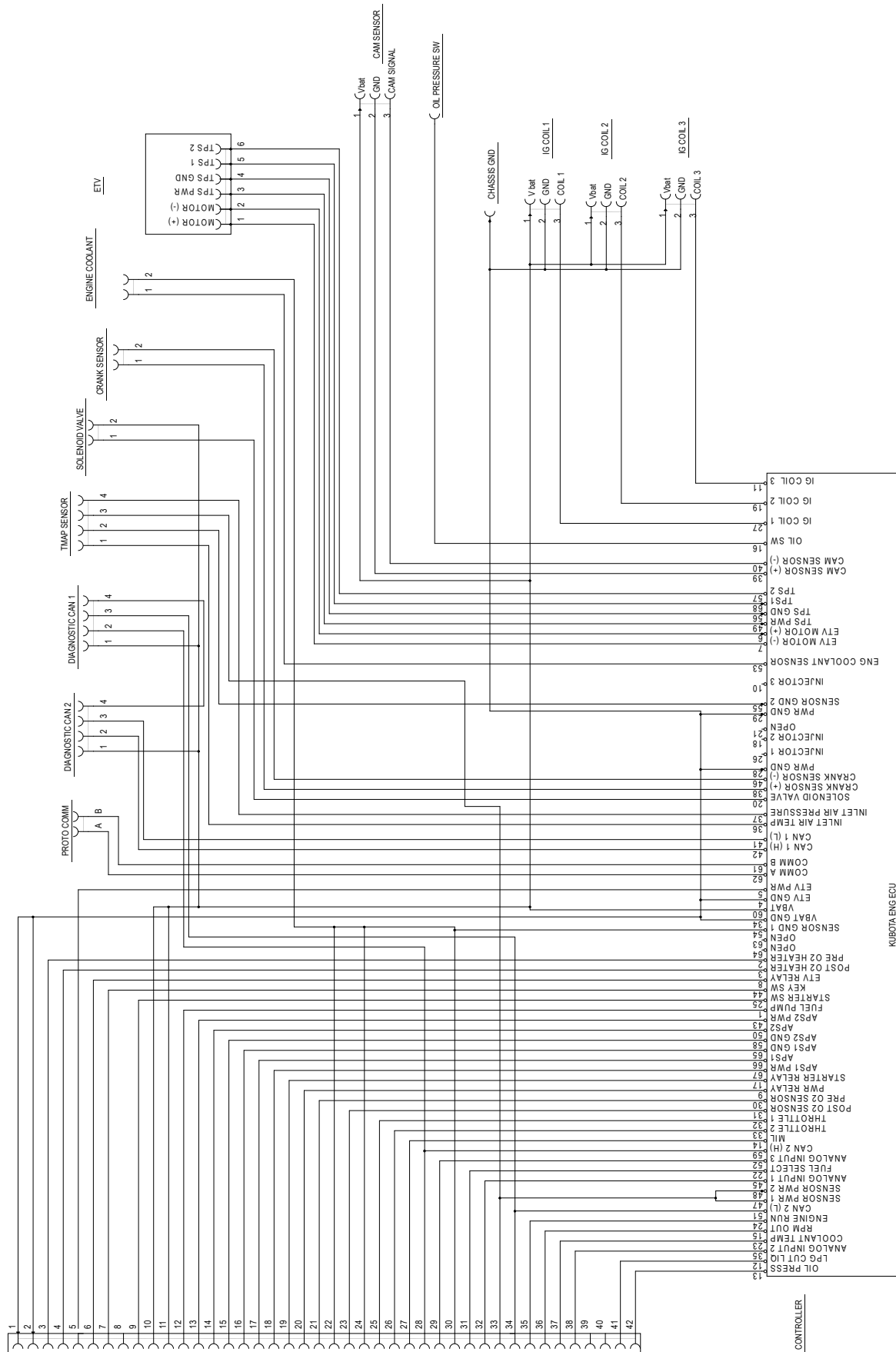
KUBOTA LPG (LEV) ENGINE SYSTEM



U10-A-ENGINE HARNESS TO I0A3

LADDER DIAGRAM-KUBOTA-LEV ENGINE SYSTEM-2

KUBOTA LEV ENGINE SYSTEM

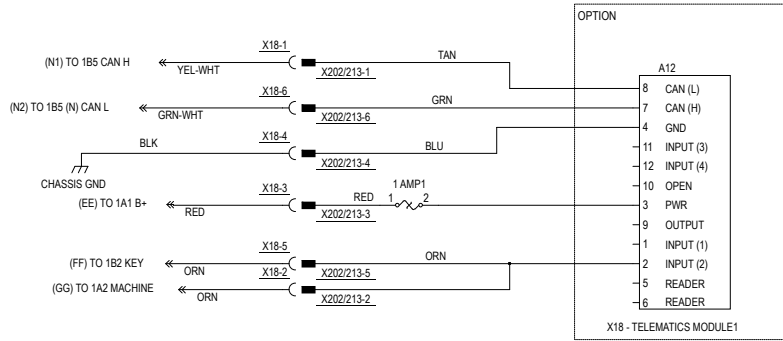


U10B ENGINE HARNESS TO 9C5

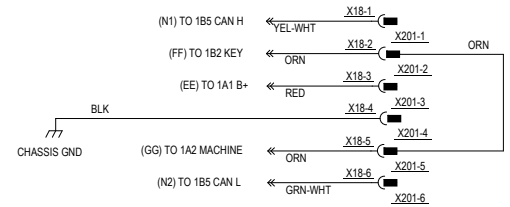
LADDER DIAGRAM-TRACK CLEAN CONNECTIONS

TRACKCLEAN CONNECTIONS

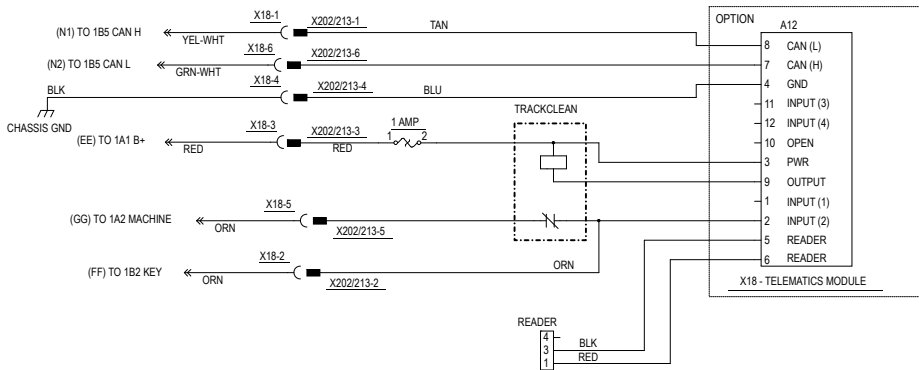
WITHOUT KEY READER



NO TRACKCLEAN



WITH KEY READER



OPTIONAL KITS & ACCESSORIES

Ref. No.	Qty	Description
		Optional Kits NOTE 3
* 56511845	1	Extended Scrub Kit
* 56509988	1	Deluxe Seat Kit NOTE 5
* 56394237	1	Deluxe Seat Kit NOTE 6
* 56509975	1	Overhead Guard Kit-79"
* 56510399	1	Overhead Guard Kit-82"
* 56383455	1	Seat Belt Kit
* 56511858	1	Brake Light/Turn Signal Kit
* 56394124	1	Rear Roller Kit-Left and Right
* 56509914	1	Front Corner Roller Kit
* 56510326	1	Super Duty Kit
* 56510605	1	Fire Extinguisher Kit
* 56511843	1	Back-Up Alarm Kit
* 56509994	1	Floor Mat Kit
* 56511855	1	Ecoflex Kit-Advance
* 56509811	1	High Pressure Pump Kit-Diesel
* 56509810	1	High Pressure Pump Kit-Lpg
* 56509729	1	Plugged Filter Switch Kit
* 56509728	1	Hopper Temperature Sensor Kit
* 56383045	1	Light Kit
* 56511852	1	Overhead Guard Beacon Kit
* 56510444	1	Overhead Guard Canopy Kit
* 56511851	1	Warning Beacon Kit
* 56510424	1	Solution Fill Shut-Off Kit
* 56510443	1	Vac Wand Kit
* 56511839	1	Wash Hose Kit
* 56510015	1	Water Heater Option-LPG
* 56510464	1	Water Heater Option-Diesel
* 56383189	1	Arm Rest Option (R/H Only)
* 56511741	1	Squeegee Guard Kit
* 56510450	1	Front Bumper Kit
* 56601410	1	Drain Hose Extension
* 56111280	1	Recovery Tank Clean Out Kit
* 56510465	1	Accessory Socket Kit
* 56511841	1	Dust Guard Kit
* 56394268	1	Battery Watering Kit

OPTIONAL KITS & ACCESSORIES

Ref. No.	Qty	Description
<u>Squeegee Blade Kits (See Squeegee Blade Selector Guide)</u>		
56510371	1	Blade kit-Squeegee - Linatex NOTE 1
* 56510372	1	Blade kit-Squeegee Gum NOTE 1
* 56510373	1	Blade Kit-Squeegee PU NOTE 1
<u>Deck Blade Kits</u>		
56510374	1	Blade Kit-Deck - Linatex NOTE 2
* 56510375	1	Blade Kit-Deck Gum NOTE 2
* 56510376	1	Blade Kit-Deck PU NOTE 2
<u>Options</u>		
56383293	1	Wheel-Drive 310x140 NOTE 4
<u>Accessories</u>		
* 56044725	1	Literature Pack
<u>Scrub Brushes (See Brush Selector Guide)</u>		
* 56505780	3	Short Trim Pad Holder
* 56505195	3	Pad Retainer for 56505750
* 56505785	3	ProLite
* 56505784	3	Prolene
* 56505786	3	Union Mix
* 56505783	3	AgLite Grit 500
* 56505787	3	MidGrit 240
* 56505788	3	MidLite Grit 180
* 56505782	3	Dyna Grit 80
* 56505781	3	Magna Grit 46
<u>Main Brooms</u>		
56394458	1	Broom-Main - Spiral
* 33018856	1	Broom-Main Nylon
* 33018857	1	Broom-Main Prolene
<u>Side Brooms</u>		
56510707	1	Broom-Side Poly

* = Optional, Not Included

NOTE 1: All squeegee blade kits include both front and rear squeegee blades.

NOTE 2: All Deck Blade Kits include all blades for both skirt assemblies

NOTE 3: Replacement parts for the kits listed above can be found on each kit's associated instruction sheet.

NOTE 4: This drive wheel can be used in place of the standard drive wheel 56509157 for increased traction.

NOTE 5: Use with Solution Tank 56511578.

NOTE 6: Use with Solution Tank 56394200.

RECOMMENDED SPARE PARTS

Ref. No.	Qty	Description	Ref. No.	Qty	Description
		Wear Parts			Extra Ordinary Maintenance
		Brushes			Actuators
56505780		Short Trim Pad Holder	56511263		Actuator-Scrub Deck
56505195		Pad Retainer (For 56505780)	56511259		Actuator-Squeegee Lift
56505785		ProLite	56116781		Actuator-Side Broom
56505784		Prolene	56511260		Actuator-Broom Lift
56505786		Union Mix	56511758		Actuator-Dump Door
56505783		AgLite Grit 500	56511657		Actuator-Steering 36V
56505787		MidGrit 240			Relays
56505788		MidLite Grit 180	40892A		Relay, DPDT 36VDC (K1 / Main Relay)
56505782		Dyna Grit 80	40892A		Relay, DPDT 36VDC (K5 / Steering Relay)
56505781		Magna Grit 46			Fuses
		Brooms	56303297		Fuse, 400 Amp F1
56394458		Broom-Main - Spiral	N/A		Fuse, 150 Amp F2
33018856		Broom-Main Nylon			Sensors - Switches
33018857		Broom-Main Prolene	N/A		Current Sensor (Brush)
		Side Brooms	N/A		Current Sensor (Broom)
56510707		Broom-Side Poly	N/A		Current Sensor (Vac)
		Deck Blades & Hardware	56511830		Sensor-Proximity (Hopper Interlock)
		Left Skirt	56509932		Switch-Extended Scrub Level (Optional)
56510374		Blade Kit-Deck - Linatex	56511830		Sensor-Proximity (Brake)
56510375		Blade Kit-Deck White Gum	56509761		Switch-Vacuum (Plugged Filter Kit / Optional)
56510376		Blade Kit-Deck PU	56511830		Sensor-Proximity (Hopper Dump Door Extent)
56510810		Arm Kit-Side Squeegee	56418405		Switch-Temperature (Hopper Temp Sensor Kit)
56510883		Strap Kit-Side Squeegee LT FR			Motors & Carbon Brushes
56510882		Strap Kit-Side Squeegee LT RR	56511367		Shaker Motor Kit
		Right Skirt	56508440		Starter Motor LPG
56510374		Blade Kit-Deck - Linatex	56419089		Starter Motor Diesel
56510375		Blade Kit-Deck White Gum	56511831		Motor 36V 0.55Hp (Hydraulic Pump Hopper Cyl)
56510376		Blade Kit-Deck PU	56511400		Motor Vacuum 36V Dc
56510810		Arm Kit-Side Squeegee	56116107		Vacuum Motor Brush Kit
56510811		Strap Kit-Side Squeegee	56384565		Motor-42vdc-115rpm-0.4hp-Right (Side Brooms)
56510812		Hardware Kit-Side Squeegee RT	56384564		Motor-42vdc-115rpm-0.4hp-Left (Side Brooms)
56510813		Guard Kit-UHMW	56384521		Sidebroom Motor Brush Kit (For 56384565 & 56384564)
56511213		Guard-Edge Scrub	56510737		Motor Kit Drive
		Filters	56511366		Motor Shaker
56510354		Filter rectangular synthetic	56511937	1	Gearmotor Assy-Center
56511572		Oil filter cartridge LPG	56511935	2	Gearmotor Assy-Left
56510095		LPG Tank filter Assy	56511936	1	Gearmotor Assy-Right
56419086		Fuel Filter Cartridge Diesel	56422152	1	Brush Kit (for 56511937, 56511935, 56511936)
56482659		Oil filter cartridge Diesel	56511921		Motor Dust Control
56413194		Screen filter Recovery system	56509168		Motor Drive
56413195		Filter Recovery system	56510740		Motor Kit-Broom
56510581		Filter kit Solution	56422152		Brush Kit-Motor (for Broom Motor)
56407162		Filter Solution			Pumps
56482028		Filter Safety	56511864		Fuel Pump (Petrol/Gasoline/Diesel)
56482029		Filter Primary	56511834		Pump water, 36v M19 Ecoflex
		Hopper System	56510888		Detergent Pump Kit
56509146		FLAP & Seal-Hopper Door Bottom	56511549		Water Pump Assy LPG
56511192		Dump Door Assy	56509374		Hydraulic Pump/Reservoir Assy
56509399		Seal-Hopper	56110742		Pump-Chemical Metering (EcoFlex / Optional)
		Recovery System			Printed Circuit Boards
56510232		Gasket-Recovery Cover	56511698		Controller-Traction Drive
56509985		Hose-Squeegee	56511588		User Interface Panel Assy
56383261		Drain Hose Kit	56511598		Controller-Steering
56510583		Float Ball Cage Kit	56511615		Torque Feedback Device
56510678		Gasket-Tank			MISC
		Wheel System	56508456		Spark Plug
56509157		Wheel-Drive 310x140	56510629		Belt-Fan (Petrol / Gasoline Engine)
56383402		Wheel-Mold-On 16.2 X 4	56509442		Belt-3VX X 45.0
			56510185		Governor-Controller
			56510738		Lug Nut Kit
			56511577		Belt-Fan-34.75 Od (LEV Engine)
			56419087		Fan Belt (Diesel Engine)

BRUSH SELECTOR GUIDE

We provide brushes and pad holders that will give you the best possible performance between machine and floor. Following are descriptions of the materials and their applications.

- ProLite:** Bristles are made from light-duty polypropylene for general scrubbing when you do not want to scratch or remove finish from the floor. Recommended for use in place of red pads.
- Prolene:** Polypropylene material for medium-duty scrubbing on concrete, terrazzo and vinyl floor tile. Recommended for use in place of green or blue pads.
- Union Mix:** Medium grade natural fibers for polishing finished floors with standard-speed equipment. Recommended for use in place of white pads.
- AgLite Grit 500:** For light scrubbing when used wet; buffing or polishing when used dry on urethane coated, sealed concrete or other resilient hard surface floors. Recommended for use in place of red or white pads.
- MidGrit 240:** For general purpose scrubbing when you need a lighter action for sealed or unsealed concrete, stone, terrazzo, quarry tile and other resilient hard floor surfaces. Recommended for use in place of green or blue pads.
- MidLite Grit 180:** For general purpose scrubbing of sealed or unsealed concrete, stone, terrazzo, quarry tile and other resilient hard floor surfaces. Recommended for use in place of green or blue pads.
- Dyna Grit 80:** For aggressive, heavy-duty scrubbing or stripping of floors. Recommended for use in place of brown pads.
- Magna Grit 46:** For extreme heavy-duty scrubbing or stripping of floors. This brush has extra large diameter silicon carbide grit impregnated synthetic bristles. Recommended for use in place of black pads.
- Short Trim**
- Pad Holder:** Made with a structural foam block and center ring for correct pad centering. It has a "shower feed" design for getting solution to the floor.

BRUSHES

- 56505780 - Short Trim Pad Holder
- 56505195 - Pad Retainer for 56505800
- 56505785 - ProLite
- 56505784 - Prolene
- 56505786 - Union Mix
- 56505783 - AgLite Grit 500
- 56505787 - MidGrit 240
- 56505788 - MidLite Grit 180
- 56505782 - Dyna Grit 80
- 56505781 - Magna Grit 46

DISC BRUSH APPLICATION GUIDE (SUGGESTION ONLY)

	46	80	180	240	500			Union
Application	Grit	Grit	Grit	Grit	Grit	Prolene	Prolite	Mix
Stripping:								
Concrete	X	X						
Terrazzo	X	X						
Ceramic/Quarry tile		X						
Vinyl tile		X						
General Scrubbing:								
Concrete	X	X	X	X		X		
Terrazzo			X	X	X	X		
Ceramic/Quarry tile			X	X	X	X		
Marble					X		X	
Vinyl tile			X		X	X		
Raised-rubber tile					X		X	
Polishing:								
Raised Disc Tile								X
Marble								X
Vinyl tile								X

BROOM SELECTOR GUIDE

cylindrical Brush Application Guide (suggestion only)

Application	46 Grit	80 Grit	180 Grit	Polypro- pylene	Stiff Nylon	Soft Nylon
Stripping:						
Concrete	X	X				
Terrazzo	X	X				
Ceramic/Quarry tile		X				
Vinyl tile		X				
General Scrubbing:						
Concrete	X	X	X	X	X	
Terrazzo			X	X	X	X
Ceramic/Quarry tile			X	X	X	X
Marble			X		X	X
Vinyl tile			X	X	X	X
Raised-rubber tile			X			X

Main Broom: 56394458 Prolene & Wire (STD.) (6 Double Rows)

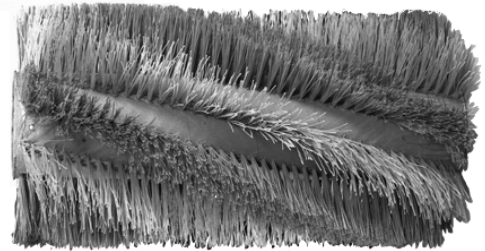
This broom has a more aggressive cleaning action, used to pick up heavier debris.

33018857 Prolene (Optional) (6 Double Rows)

A top quality synthetic fiber. This filament is made for a wide variety of applications. Retains its stiffness when wet and resists abrasive chemicals, solvents and oils. A general purpose material offering high performance for a wide range of applications.

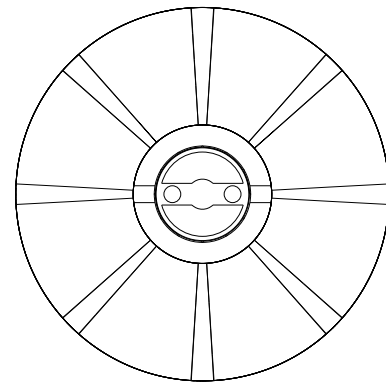
33018856 Nylon (Optional) (6 Double Rows)

General purpose broom that can be used for all types of light soil. High wear material so uneven surfaces do not cause excessive wear. Nylon has a high heat deflection temperature, is chemical resistant and will absorb water in wet conditions. Truly a general purpose broom.



6 Double Row

Length..... 35.43" (90 cm)
Diameter.... 12.20" (31 cm)



Side Broom: 56510707 Polypropylene (STD.)

The side broom function is to sweep the dirt and debris away from the curb, wall, pallet, etc. into the path of the main broom.



Diameter 22" (56 cm)

SQUEEGEE BLADE SELECTOR GUIDE

Gum Rubber: Provides superior wiping action on tile, terrazzo, and polished floors.

Linatex Rubber: Provides longest life on finished or unfinished concrete floors.

Polyurethane: Oil resistance provides superior life in applications with oily floors.

SQUEEGEE BLADE APPLICATION GUIDE(SUGGESTION ONLY)

Performance Traits	Gum Rubber (Natural Rubber)	Linatex Rubber (Natural Rubber)	Polyurethane/ Pentathane
Tear Strength		X	X
Abrasion Resistance		X	X
Applications			
Oil Resistant Applications			X
Appearance	Tan	Red	Translucent



9435 Winnetka Ave North
Minneapolis, MN 55445
www.advance-us.com
Phone: 800-989-2235
Fax: 800-989-6566
©2020 Nilfisk, Inc.

